



HAL
open science

Hepatocellular carcinoma surgery outcomes in the developing world: A 20-year retrospective cohort study at the National Cancer Institute of Peru

Eloy Ruiz, Teresa Rojas Rojas, Francisco Berrospi, Ivan Chávez, Carlos Luque, Luis Cano, Franco Doimi, Pascal Pineau, Eric Deharo, Stephane Bertani

► To cite this version:

Eloy Ruiz, Teresa Rojas Rojas, Francisco Berrospi, Ivan Chávez, Carlos Luque, et al.. Hepatocellular carcinoma surgery outcomes in the developing world: A 20-year retrospective cohort study at the National Cancer Institute of Peru. *Heliyon*, 2016, 2 (1), pp.e00052. 10.1016/j.heliyon.2015.e00052 . hal-01356598

HAL Id: hal-01356598

<https://hal-amu.archives-ouvertes.fr/hal-01356598>

Submitted on 26 Aug 2016

HAL is a multi-disciplinary open access archive for the deposit and dissemination of scientific research documents, whether they are published or not. The documents may come from teaching and research institutions in France or abroad, or from public or private research centers.

L'archive ouverte pluridisciplinaire **HAL**, est destinée au dépôt et à la diffusion de documents scientifiques de niveau recherche, publiés ou non, émanant des établissements d'enseignement et de recherche français ou étrangers, des laboratoires publics ou privés.



Distributed under a Creative Commons Attribution - NonCommercial - NoDerivatives | 4.0 International License

Received:
8 September 2015
Revised:
31 October 2015
Accepted:
3 December 2015

Heliyon (2016) e00052



Hepatocellular carcinoma surgery outcomes in the developing world: A 20-year retrospective cohort study at the National Cancer Institute of Peru

Eloy Ruiz^a, Teresa Rojas Rojas^b, Francisco Berrospi^a, Ivan Chávez^a,
Carlos Luque^a, Luis Cano^c, Franco Doimi^c, Pascal Pineau^{d,e}, Eric Deharo^{f,g},
Stéphane Bertani^{f,h,*}

^a Instituto Nacional de Enfermedades Neoplásicas, Departamento de Cirugía en Abdomen, Lima, Peru

^b Aix Marseille Université, UMR912 SESSTIM INSERM-IRD-AMU, Centre d'Epidémiologie et de Santé Publique des Armées, Marseille, France

^c Instituto Nacional de Enfermedades Neoplásicas, Departamento de Patología, Lima, Peru

^d Institut Pasteur, Unité Organisation Nucléaire et Oncogénèse, Paris, France

^e Institut National de la Santé et de la Recherche Médicale, Paris U993, France

^f Université de Toulouse, UPS, UMR152 PHARMADEV, Université Toulouse 3, Toulouse, France

^g Institut de Recherche pour le Développement, UMR152 PHARMADEV, Vientiane, Laos

^h Institut de Recherche pour le Développement, UMR152 PHARMADEV, Lima, Peru

* Corresponding author at: Representation IRD in Peru, Casilla 18-1209, Lima 18, Peru.

E-mail address: stephane.bertani@ird.fr (S. Bertani).

Abstract

In the developing world, most patients with hepatocellular carcinoma present with advanced-stage disease, considered to be incurable based on current therapeutic algorithms. Here, we demonstrate that curative liver resection is achievable in a portion of Peruvian patients not addressed by these treatment algorithms. We conducted a retrospective cohort study of 253 hepatocellular carcinoma patients that underwent a curative hepatectomy between 1991 and 2011 at the National Cancer Institute of Peru. The median age of the cohort was

36 years, and merely 15.4% of the patients displayed cirrhosis. The average tumor size was over 14 cm in diameter, resulting in 76.3% of major hepatectomies performed. The 5- and 10-year survival probability estimates were 37.5% and 26.2%, respectively. Age (>44 vs. ≤44 years old; $P = 0.005$), tumor size (>10 cm vs. ≤10 cm in diameter; $P = 0.009$), cirrhosis ($P < 0.001$), satellite lesions ($P < 0.001$), macroscopic vascular invasion ($P < 0.001$), allogeneic blood transfusion ($P = 0.011$), and spontaneous rupture of the tumor ($P = 0.006$) were independent predictive factors for prognosis. Hepatocellular carcinomas in Peru are characterized by a distinct clinical presentation with notable features compared with those typically described throughout relevant literature. Despite a large number of advanced-stage hepatocellular carcinomas, the outcomes of liver resection observed in the present study were in good standing with the results previously described in other series. It thus appears that staging systems and associated therapeutic algorithms designed for use in the developed world remain inadequate in certain populations, especially in the context of Peruvian patients. Our findings suggest that clinicians in the developing world should reconsider management guidelines pertaining to hepatocellular carcinoma. Indeed, we hypothesize that, in developing countries, a strict adherence to these therapeutic algorithms might create a selection bias resulting in the dismissal of patients who could eventually be treated.

Keywords: Health sciences, Pathobiology of cancer, Cancer, Treatment of cancer

1. Introduction

We have described the peculiar clinical presentation of hepatocellular carcinoma (HCC) observed in the patients examined at the National Cancer Institute of Peru [1]. Remarkably, half of these patients are under 40 years of age presenting with massive primary tumors in the liver uniquely characterized by extremely low rate of cirrhosis and a relatively low rate of tumor invasiveness. This unique pathophysiological pattern of HCC coincides with a distinct mutation spectrum featuring genetic insertions and deletions, in contrast with the transitions and transversions paramount to the mutation spectra of HCCs from North Africa, North America, East Asia, and Europe [2]. These findings suggest that an uncommon and unique tumor process occurs in the Peruvian patient population. Likewise, the distribution of the HCC-related risk factors in Peru is rather unusual with low prevalence of alcohol abuse, non-alcoholic steatohepatitis, and chronic hepatitis C. In addition, hepatitis B virus (HBV), the major etiologic agent of primary liver cancer in the country, follows an unconventional pattern: while primary liver cancer risk is correlated with elevated HBV viral loads in Eastern Asia, almost half of HBV-associated HCCs develop in a context of occult infection in Peru [1].

The global incidence of HCC has doubled during the last two decades, with the highest burden arising in the developing world [3,4]. To date, curative treatment of HCC relies primarily on surgical intervention, and particular for developing countries, on rarely performed liver resections. In this context, a vast majority of patients visit physicians with advanced-stage cancer, drastically limiting the use of liver transplantation and percutaneous ablation for treatment. As a consequence, HCC is particularly lethal in the Global South. Worldwide, 82.8% of liver cancer cases occur in the developing world, which also accounts for 83.6% of liver cancer-related deaths [4]. Thus, new affordable methods for early detection and intervention are needed to improve patient outcomes.

In order to guide practitioners in clinical management strategies, various therapeutic algorithms based on the stratification of the patients with HCC have been elaborated by groups of experts from North America, East Asia, and Europe. These staging systems have been compared to each other using cohort studies, conducive to build international consensus [5, 6]. However, the at times limited performance of the current therapeutic algorithms probably stems in part from their lack of interoperability in different populations of patients. Based on our long-term practice in primary liver cancer management in Peru, we suspect that some of these algorithms do not account for patients' groups, notably those from developing countries.

Here we present the data from 20 years of liver resection practice for HCC in Peru, in which massive tumors on non-cirrhotic livers in juvenile patients were prevailing. Specifically, this study was conducted retrospectively within a cohort assembled by analyzing the medical records of patients with HCC who underwent curative liver resection. Taking into consideration the peculiar clinical presentation encountered in Peru (a country in a hitherto neglected world region regarding studies of primary liver cancer), we think that our experience in the management of HCC can provide valuable information for the international community of health professionals on the development and usage of such staging systems. We are also convinced that our experience can lead in many instances to local reconsiderations of the strategy for the surgical management of HCC. Finally, we emphasize the necessity of searching for a truly multiregional consensus, taking into account local contexts.

2. Materials and methods

2.1. Ethics statement

Written consent was given by the patients for their information to be stored in the Department of Cancer Statistics and Epidemiology of the National Cancer Institute of Peru, and used for research. The study conforms to the ethical principles contained in the Declaration of Helsinki, and was approved by the

Human Subjects Committee of the National Cancer Institute of Peru (Protocol Number #INEN10-05).

2.2. Patients' data collection

Between January 1991 and December 2011, a total of 339 patients with HCC were operated on in the Department of Abdominal Surgery of the National Cancer Institute of Peru. From this initial cohort, we selected a series of 253 patients with no extrahepatic metastases who underwent curative hepatectomy, i.e. complete (R0) resection of the tumoral liver lesions, ensuring tumor-free margins. The 86 patients excluded from this study were individuals who underwent partial (R2) resection ($n = 70$) or orthotopic liver transplantation ($n = 2$), with synchronous and secondary malignancies ($n = 12$), or for whom the medical record was not exhaustive ($n = 2$). The dataset included the patients' medical records, hepatitis B and C serology, preoperative liver function, alpha-fetoprotein (AFP) serum level, perioperative morbidity and mortality, hospital length of stay, as well as HCC recurrence and survival until August 2015.

2.3. Surgical procedure

Anatomical resection was the preferential treatment, but was not performed on patients with cirrhosis. In cases of cirrhotic liver, only patients with Child-Pugh class A were considered eligible for major hepatic resection, whereas patients with Child-Pugh class B were offered minor hepatic resection. Interventions were performed through midline, J-shaped, or bilateral subcostal abdominal incision, according to the tumor location and the physical characteristics of the patient. After incision, the abdominal cavity was extensively explored in order to discard any suggestions of additional hepatic disease, and the status of the future remnant liver was evaluated. This examination has been complemented by ultrasound exploration since 2000. After detaching the hilar plate, we started the afferent vascular control with the ligation and the division of the arterial and portal pedicles at the hilum. Suprahepatic veins were controlled outside the liver. Pringle or hemi-Pringle maneuvers were performed *pro re nata*. Total hepatic vascular exclusion was performed for tumors involving inferior vena cava or hepatic veins. Since 2001, we employed the anterior approach with or without a hanging maneuver in order to prevent tumor embolism. Liver parenchymal transection was performed by crush-clamping. Medium-sized blood vessels and bile ducts were ligated, while the smallest ones were cauterized. After the removal of the surgical piece, we achieved hemostasis by cauterizing liver bed bleeding by using an argon plasma coagulator or a hemostatic dissection device. Finally, a closed drainage system was installed. After surgical intervention, it was mandatory to admit cirrhotic patients to the intensive care unit of the National Cancer Institute of Peru. Patients without cirrhosis, however, were transferred to the intensive care unit at

the discretion of the surgical team, based on the patient's post-operative health status. Patients were monitored throughout their hospital stay, and the drain was removed when the biliary fistula was discarded. Adjuvant chemotherapy was not routinely administered.

2.4. Patients' follow-up

Patients had an extensive checkup twice during the first month after leaving hospital, then every two months during the first year, and finally every four months from the third year onward. Liver regeneration and function were respectively assessed by abdominal computed tomography scan and liver function tests, including monitoring of the AFP serum level. While AFP concentration was above 10 ng/mL, the eventuality of recurrent or metastatic HCC was assessed by abdominal ultrasound and chest and bone radiographs. If necessary, the exam was completed by computed and positron emission tomographies. In cases of intrahepatic recurrence, the feasibility of surgical intervention was promptly evaluated, and when possible, tumor re-resection was performed *quam primum*. When recurrent HCC was unresectable, palliative treatments, such as intra-arterial chemoembolization, percutaneous ethanol injection, radiofrequency ablation, or tyrosine-kinase inhibitor chemotherapy, were applied. Surgical pulmonary resection was carried out in cases of single lung metastasis. Bone metastases were treated with radiation therapy. In cases without any follow-up, the National Registry of Identification and Civil Status of Peru was solicited in order to determine the fate of the patient.

2.5. Pathology report

Pathologists determined the macroscopic tumor size (i.e., longest chord measured), the nodule number, the presence of vascular invasion, and the structure of the non-tumoral liver parenchyma. HCC and non-tumoral liver diagnostic features were confirmed on hematoxylin and eosin-stained liver sections. The tumor grade was assessed according to the American Joint Committee on Cancer [7].

2.6. Statistical analysis

Survival probability estimates were calculated by the Kaplan–Meier method from the date of surgery [8]. Log-rank test was used for survival distribution comparison [9]. Postoperative deaths were included in the survival analysis, and subsequent decease from any cause was considered an event. Potential predictors of survival were evaluated using the Cox proportional-hazards regression model [10]. Statistical analyses were performed with an alpha significance level 0.05, using IBM SPSS Statistics software version 19.0.

3. Results

3.1. Clinical presentation of hepatocellular carcinoma

Table 1 shows an overview of the clinical features of the 253 patients with complete resection at the time of surgery operated in the Department of Abdominal Surgery of the National Cancer Institute of Peru between January 1991 and December 2011. Over this 20-year period, an examination of the patient population structure did not reveal a noticeable evolution in terms of tumor presentation and clinical pathology and chemistry. The mean patient age was low; half of the patients were less than 36 years old. The average tumor size was over 14 cm in diameter, 73% of the patients presented with a tumor larger than 10 cm. The predominant histopathological architecture of the tumors was the trabecular pattern (70%), whereas fibrolamellar carcinomas represented a small minority of the cases (1.6%) despite the overall young age of the cohort. Major vascular invasion occurred only in 11% of the cases, all of them with a tumor larger than 10 cm in diameter. Merely 15% of the resections were performed on cirrhotic livers.

3.2. Hepatic resection category

Table 2 presents descriptive statistical results for the resection category. The largest majority of the liver cancer resections, i.e. 76.3%, were major hepatectomies, frequently extended to segment 1. Such a high ratio is rarely found in relevant literature, in which major hepatectomy represents often a minority of intervention [13].

3.3. Postoperative period, recurrence pattern, and cancer survival

Table 3 details the postoperative morbidity (grades I to IV) and mortality (grade V). Immediate postoperative bleeding and liver failure were the most frequent and severe complications. The 30- and 90-day postoperative mortality rates were of 5.1% and 7.1%, respectively. Table 4 summarizes the descriptive statistic results for recurrence. In the follow-up period, 59% of the patients developed recurrence, and 15.5% of them underwent re-resection. Fig. 1A shows the overall and recurrence-free survival rates in the 20 years post-surgery ($P = 0.0033$). The 5- and 10-year survival probability estimates were 37.5% and 26.2%, respectively. The 5- and 10-year recurrence-free survival probability estimates were 22.9% and 16.2%, respectively. Fig. 1B displays the survival rates in the 20 years post-surgery with patients stratified according to the Barcelona-Clinic Liver Cancer (BCLC) stage disease; eight (3.2%) patients having BCLC A stage disease, 214 (84.6%) having BCLC B, and 31 (12.3%) having BCLC C [15, 16]. The 5-year survival probability estimates for patients with BCLC stages A and B were 50% and 36.8%,

Table 1. Baseline demographic and clinical features of the patient population investigated.

Feature	Parameter	Number	Percentage
Cohort	Headcount	253	100
Age	Mean \pm SD	41.9 \pm 21.4	n/a
	Median	36	n/a
	Range	[3–89]	n/a
	Interquartile range	39	n/a
Gender	Female	103	40.7
	Male	150	59.3
Cirrhosis	Absent	214	84.6
	Present	39	15.4
HBsAg	Negative	141	55.7
	Positive	112	44.3
Anti-HCV*	Negative	194	96.5
	Positive	7	3.5
Tumor size (cm)	Mean \pm SD	14.2 \pm 5.9	n/a
	Median	14.5	n/a
	Range	[2–33]	n/a
	Interquartile range	8.4	n/a
	<5	15	5.9
	[5–10]	53	20.9
Multinodular tumors	Present	78	30.8
	Absent	175	69.2
Bilobar tumors	Present	80	31.6
	Absent	173	68.4
Child-Pugh class**	A	30	76.9
	B	9	23.1
Vascular invasion	Macro	29	11.5
	Micro	64	25.3
	Negative	160	63.2
Histopathology	Trabecular	177	70
	Acinar	10	4
	Compact	17	6.7
	Mixed trabecular and acinar	36	14.2
	Sarcomatoid	9	3.5
	Fibrolamellar	4	1.6
AFP (ng/mL)	Mean \pm SD	93,026 \pm 241,792	n/a
	Median	2651	n/a
	Interquartile range	56,826.8	n/a

(Continued)

Table 1. (Continued)

Feature	Parameter	Number	Percentage
Albumin (g/L)	Mean \pm SD	38.7 \pm 9.7	n/a
	Median	39	n/a
	Interquartile range	10	n/a
Alkaline phosphatase (U/L)	Mean \pm SD	187.3 \pm 205.8	n/a
	Median	129	n/a
	Interquartile range	159	n/a
Alanine transaminase (U/L)	Mean \pm SD	63.2 \pm 90.2	n/a
	Median	40	n/a
	Interquartile range	77	n/a
Aspartate transaminase (U/L)	Mean \pm SD	100.2 \pm 115.6	n/a
	Median	60	n/a
	Interquartile range	40	n/a
Direct bilirubin (μ mol/L)	Mean \pm SD	7.3 \pm 29.7	n/a
	Median	2	n/a
	Interquartile range	4.1	n/a
Indirect bilirubin (μ mol/L)	Mean \pm SD	10.2 \pm 13.5	n/a
	Median	8	n/a
	Interquartile range	18.5	n/a
Total bilirubin (μ mol/L)	Mean \pm SD	18.2 \pm 41	n/a
	Median	12	n/a
	Interquartile range	14.2	n/a
Gamma-glutamyl transferase (U/L)	Mean \pm SD	288 \pm 1,210	n/a
	Median	124	n/a
	Interquartile range	158	n/a
Prothrombin time (s)	Mean \pm SD	13.1 \pm 1.7	n/a
	Median	12.8	n/a
	Interquartile range	2.1	n/a
International normalized ratio	Mean \pm SD	1.1 \pm 0.2	n/a
	Median	1.1	n/a
	Interquartile range	0.2	n/a

Percentages are expressed as ratio of the 253 patients investigated for the considered parameter, except for (*) hepatitis C infection ($n = 201$) and (**) Child-Pugh score in cirrhotic patients ($n = 39$). Histopathological architecture was defined according to the classification of tumors of the digestive system of the World Health Organization [11]. Mean values are presented with \pm Standard Deviation (SD). AFP = alpha-fetoprotein; HBsAg = HBV surface antigen; HCV = hepatitis C virus; n/a = not applicable.

respectively; while the 10-year survival probability estimates were 25% and 22.1%, respectively ($P = 0.48$). The 5-year survival probability estimate for patients with

Table 2. Hepatic resection categories.

Hepatic resection category	Subcategory	Number	Extended to segment 1
Major hepatectomy (76.3%)	Right trisectionectomy	37	7
	Left trisectionectomy	16	12
	Right hepatectomy	85	6
	Left hepatectomy	55	36
Minor hepatectomy (23.7%)	Right anterior and left medial sectionectomies	9	
	Right posterior sectionectomy	1	
	Left lateral sectionectomy	12	
	Left medial sectionectomy	5	
	Segmentectomy 1	2	
	Segmentectomy 3	1	
	Segmentectomy 5	1	
	Segmentectomy 6	2	
	Segmentectomy 8	2	
	Bisegmentectomy 4,5	4	
	Bisegmentectomy 5,6	14	
	Bisegmentectomy 7,8	1	
	Wedge	6	
	Total		253

Hepatic resection categories were defined according to the Brisbane 2000 Terminology of Liver Anatomy and Resections [12].

Table 3. Postoperative morbidity and mortality.

Complication	Grade I	Grade II	Grade IIIa	Grade IIIb	Grade IV	Grade V	Total
Bile leakage	2	2	2	1			7
Cerebrovascular accident						1	1
Evisceration	2						2
Hemorrhaging	1	2		5		3	11
Intestinal obstruction				1			1
Intra-abdominal abscess		4					4
Liver failure	1	8				6	15
Pleural effusion	1						1
Pneumonia	1					2	3
Pulmonary embolism		8				1	9
Total	8	24	2	7		13	54

Postoperative morbidity and mortality were categorized according to the Dindo–Clavien classification [14].

Table 4. Pattern of recurrence after hepatic resection.

Recurrence pattern	Status	Number	Percentage
Recurrence*	Yes	142	59.2
	No	98	40.8
Recurrence presentation**	Intrahepatic	72	50.7
	Extrahepatic	47	33.1
	Intra- and extra-hepatic	23	16.2
Re-resection***	Intrahepatic	14	19.4
	Extrahepatic	7	14.9
	Intra- and extra-hepatic	1	4.3

Any reappearance of HCC was considered as a recurrence regardless the time period after the initial intervention. Percentages were calculated with (*) 240 patients, excluding the 13 patients who died during the postoperative period (Table 3); (**) 142 patients with recurrent HCC; (***) the number of patients in relation to the site of recurrence, i.e. 72 for intrahepatic recurrence, 47 for extrahepatic recurrence, and 23 for intra- and extra-hepatic recurrence.

BCLC stage C was only 3.2% and differed significantly from the one of both BCLC stages A and B ($P = 0.0026$ and <0.0001 , respectively). Fig. 1C shows the survival rates of patients with or without cirrhosis in the 20 years post-surgery ($P < 0.0001$). The 5-year survival probability estimate among cirrhotic patients was 11.4%; whereas the 5- and 10-year survival probability estimates among non-cirrhotic patients were 40.1% and 27.9%, respectively.

3.4. Potential predictors of survival

Table 5 presents the results of the multivariate analysis for factors related to survival. Among all the parameters tested, the age, the size of the tumor, the presence of cirrhosis, satellite lesions, or macroscopic vascular invasion, as well

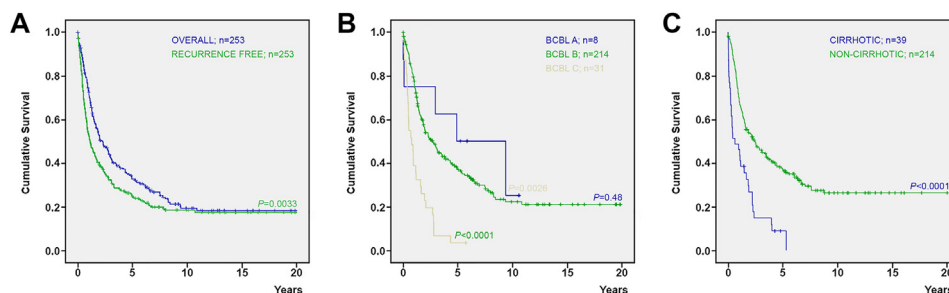


Fig. 1. Kaplan–Meier cumulative survival curves. (A) Overall and recurrence-free survivals are represented by blue and green curves, respectively. (B) Survivals for patients with BCBL A ($n = 8$), B ($n = 214$), and C ($n = 31$) stages disease are represented in green, blue, and yellow curves, respectively. (C) Survivals for patients with ($n = 39$) and without ($n = 214$) cirrhosis are represented in blue and green curves, respectively.

as allogeneic blood transfusion and spontaneous rupture of the liver tumor before surgery, were independent predictive factors for prognosis ($P < 0.05$).

4. Discussion

The aims of cancer staging systems and associated therapeutic algorithms are to rationally predict patient prognosis and to guide practitioners in deciding treatment allocation. Multiple staging systems have been developed and compared for HCC cases in order to determine which ones best predict prognosis. Indeed, the intended purpose of international collaboration between experts is to move towards an international consensus on the management of HCC [5, 6]. As a consequence of the neoplastic heterogeneity of HCC, this objective has not yet been achieved.

Since the first classification by Okuda and colleagues [17], various staging systems have been developed and notably include those of the American Joint Committee on Cancer [7], the Cancer of the Liver Italian Program [18], the French Group for the Study and the Treatment of HCC [19], the Chinese University of Hong Kong [20], the Japan Society of Hepatology [21], and the Liver Cancer Study Group of Japan [22]. The BCLC staging system is currently the most widely accepted therapeutic flow-chart across the world [15, 16], adopted by the European Association for the Study of the Liver and the American Association for the Study of Liver Disease [23, 24]. In these therapeutic algorithms, several clinico-biological parameters, such as AFP and bilirubin serum levels and presence of vascular invasion and metastases are taken into account to stratify patients and decide treatment allocation. Among those parameters, tumor features, and notably tumor size, are certainly the most critical in choosing between curative treatment and palliative care. Commonly, only early stage HCCs, up to 2 or 3 cm in diameter

Table 5. Multivariate analysis for factors related to survival.

Variable	Odds ratio	95% confidence interval (lower – upper)	P value
Age (>44 vs. ≤44 years old)	1.54	1.140 – 2.103	0.005
Tumor size (>10 cm vs. ≤10 cm in diameter)	1.74	1.152 – 2.638	0.009
Cirrhosis (presence vs. absence)	2.92	1.927 – 4.447	0.000
Macroscopic portal vein tumor thrombosis (presence vs. absence)	2.73	1.767 – 4.220	0.000
Allogeneic blood transfusion (yes vs. no)	1.48	1.094 – 2.017	0.011
Satellite lesions (presence vs. absence)	2.25	1.634 – 3.120	0.000
Spontaneous rupture of the liver tumor before surgery (yes vs. no)	2.14	1.244 – 3.689	0.006

The age cutoff was chosen according to the in-between age calculated previously [1]. The odds ratio represents the exponentiation of the intercept in the null model.

(depending on which flow-chart is used), are considered to be candidates for resection [25, 26].

In the last couple of years, a debate has taken place about the necessity of adherence to such staging systems [27, 28, 29, 30, 31]. In fact, most of these systems have been conceived by experts attending patients affected with HCC in a clinical context where cirrhotic liver represents the very large majority of the cases. However, HCC is among the most diversified types of cancer in terms of clinical presentation and molecular signature [32, 33], due in part to the variety of associated risk factors.

The team of the Department of Abdominal Surgery at the National Cancer Institute of Peru attends more than 120 patients a year diagnosed with primary liver cancer, and performs about 20 liver resections annually for HCC. These numbers have been steadily increasing during the last decades, due in part to the improvements to the national healthcare system in Peru that allow earlier patient detection, but also to the increasing trend in incidence of primary liver cancer in Latin America [4]. We recently described Peruvian patients developing HCC at a young age, and then correlated this clinical presentation to a peculiar mutation spectrum [1, 2]. In comparison with literature stating that fibrolamellar carcinoma occurs commonly in children and young adults [34], the very large majority of our patients developed HCC with a trabecular pattern (Table 1). To the best of our knowledge, Peruvian patients are remarkable for the consistent presentation of massive HCC, exceeding AFP serum level, and very low rate of cirrhosis, in distinct contrast with most observational studies described in cancer literature [1]. According to the staging systems currently available, the large majority of our patients would be scored at an advanced stage of disease with a poor prognosis (Table 1) [15, 16]. As a consequence, these patients would be mostly considered ineligible for curative liver resection.

Indeed, the Latin American Association for the Study of the Liver has recently published clinical practice guidelines for the management of HCC in the region [35]. According to the authors, these guidelines are based on an international consensus, outlining the BCLC staging system. In our case, the application of these guidelines would result in the dismissal of those patients who received surgery. For instance, if we had applied the criteria of the BCLC staging system, only eight patients from our initial cohort would have been considered as candidate for liver resection, whereas our surgical strategy allowed us to treat 214 additional patients leading to a 5-year survival ratio of 36.8% (Fig. 1B). This result has to be offset with the fact that we performed intervention only on 15% of the overall HCC patients visiting the National Cancer Institute of Peru during this period. This is why we are convinced that the authority of such prescribed guidelines should be discussed and their contextual applications

should be explicitly addressed. In fact, the adherence to international guidelines has been already questioned in real-life practice by some physicians [29, 30, 31], while a more contextualist approach has been suggested by others [36, 37].

From our perspective, only the recommendations of the Asian Pacific Association for the Study of the Liver would reflect our patient population [38]. This treatment algorithm developed in 2010 is distensible and eventually considers liver resection for a patient with HCC that is confined to the liver and technically, surgically resectable with sufficient remnant healthy liver to insure the vital hepatic functions. Through the evolution of our treatment, no suitable therapeutic flow-charts were identified; therefore, we have developed our own specific approach in the management of HCC based on our long-term experience in clinical practice in Peru. Our decision tree for curative liver resection was relatively concise, with few nodes. In using this approach, we first determined the tumor location site, i.e. whether the liver tumor is extra- or intra-hepatic. In cases with an intrahepatic tumor, we assessed the size of the remnant liver and its function by a blood test, which included measurement of the serum levels of albumin, alanine and aspartate aminotransferases, total and direct bilirubin, alkaline phosphatase, and gamma-glutamyl transpeptidase serum levels (Table 1). In addition, we calculated the prothrombin time and the international normalized ratio (Table 1). When this was conclusive, the patient was considered as a candidate for curative liver resection, regardless of the size of the tumor. In our hands, this approach, based on the absence of cirrhosis and the lack of evidence of extrahepatic tumor lesions, made liver resection the most effective treatment for nearly 15% of our patients. Unlike other cohort studies found in the literature, most resections performed in our study were major hepatectomies due to the size and the location of the tumors excised (Table 2). The surgical outcomes observed in our resected patient cohort, as well as survival rates, were in good standing compared with other cohort studies found in relevant literature (Fig. 1, Table 3 and Table 4) [13]. Furthermore, this result was attained with a cohort of patients who were mostly less than 37 years old, in spite of the tumor size and the fact that carcinomas had virtually no fibrolamellar variants (Table 1), a histotype reputed to be less disseminative [39].

Several regions of the world, encompassing most of the so-called Global South, i.e. Africa, Latin America and Caribbean, Central, West, and Southeast Asia, Melanesia, and Polynesia (as defined by the International Agency for Research on Cancer [4]), have not been closely examined regarding the natural history and the most common clinical presentation of HCC. Most of these countries do not have the benefit of population-based cancer registries, and the coverage of cancer information is obtained sparsely by extracting data from patients' medical records. Yet, in developing countries, patients with liver cancer which would be considered advanced are rapidly dismissed from the chain of care [40]. This situation is partly due to the lack of alternative therapeutic support after a basic

doctor's visit, during which a poor prognosis may be given according to the current staging systems. These poorly documented patients are often among the most deprived people, frequently living in remote areas [4, 40]. It is thus difficult to determine their fate once dismissed from the chain of care. As a consequence, a frequently unusual clinical presentation of HCC, as reported in Peru [1, 2], that contradicts the situation commonly described in available staging systems, could easily go unnoticed, despite the fact that some of these tumors would eventually be treatable. A rigid adherence to the current therapeutic algorithms in developing countries, without taking into account both local epidemiology and clinical presentation [3], might thus lead to a selection bias culminating in damaging adverse effect on a fraction of the local patients, and then, self-perpetuating the local application of these algorithms. Brought back to the Peruvian context, predictive factors such as those listed in Table 5 could be of special interest to build the foundations of a context-related interventional flow-chart.

Current data reports discrepancies in the performance of therapeutic algorithms typically used for patient populations originating in North America, East Asia, or Europe. Thus, it is highly plausible that these differences exist when these therapeutic algorithms are applied to regions which are underserved with poor documentation of liver cancer outcomes. Therefore, there must be an in-depth discussion for a contextualist approach to HCC surgery in those regions. In this regard, new considerations for tumor size and morphology reflected in recent, 7th edition update of the tumor-node-metastasis classification [41, 42], as well as the recommendations of the Asian Pacific Association for the Study of the Liver [38], represent interesting advances, as they open up new intervention possibilities.

Declarations

Author contribution statement

Eloy Ruiz: Conceived and designed the experiments; Performed the experiments; Analyzed and interpreted the data; Wrote the paper.

Teresa Rojas Rojas: Analyzed and interpreted the data.

Francisco Berropsi, Ivan Chavez, Carlos Luque, Luis Cano: Performed the experiments.

Franco Doimi: Performed the experiments; Contributed reagents, materials, analysis tools or data.

Pascal Pineau, Eric Deharo, Stéphane Bertani: Conceived and designed the experiments; Analyzed and interpreted the data; Wrote the paper.

Funding statement

Eloy Ruiz, Luis Cano, and Franco Doimi were supported by the Young Research Teams Associated to IRD Program (INCAncer). Teresa Rojas Rojas was supported by a doctoral fellowship from the Peruvian Fund for Innovation, Science, and Technology Program's Scholarships for Doctoral Studies Abroad (BECA-1-P-155-13). Pascal Pineau, Eric Deharo, and Stéphane Bertani were supported by the Third Cancer Plan of the French National Alliance for Life Sciences and Health (ENV201408).

Conflict of interest statement

The authors declare no conflict of interest.

Additional information

No additional information is available for this paper.

Acknowledgements

The authors wish to acknowledge all patients whose participation was essential to the achievement of this study. The authors are grateful to Karina Cancino, Juan-Pablo Cerapio, Dany Cordova, Macarena Farías, Marlene Nuñez, Maria Solis, and Maricarmen Valera from the Department of Pathology of the National Cancer Institute of Peru for their leadership in aggregating the medical records; Jacques Gardon from the Institut de Recherche pour le Développement and Agnès Marchio from the Institut Pasteur for their critical discussions; and Elizabeth Elliott, Brian Gadd, and David D. Parker Jr. for their suggestions in preparing the manuscript. The authors thank the Ando-Amazonian International Mix Laboratory of Life Chemistry (LMI-LAVI), IRD-UPCH, for its logistic support.

References

- [1] S. Bertani, P. Pineau, S. Loli, J. Moura, M. Zimic, E. Deharo, et al., An atypical age-specific pattern of hepatocellular carcinoma in Peru: a threat for Andean populations, *PLoS One* 8 (2013) e67756.
- [2] A. Marchio, S. Bertani, T. Rojas Rojas, F. Doimi, B. Terris, E. Deharo, et al., A peculiar mutation spectrum emerging from young Peruvian patients with hepatocellular carcinoma, *PLoS One* 9 (2014) e114912.
- [3] E. Bender, Developing world: global warning, *Nature* 509 (2014) S64–S65.
- [4] J. Ferlay, I. Soerjomataram, R. Dikshit, S. Eser, C. Mathers, M. Rebelo, et al., Cancer incidence and mortality worldwide: sources, methods and

- major patterns in GLOBOCAN 2012, *Int. J. Cancer*. 136 (2015) E359–E386.
- [5] J.M. Henderson, M. Sherman, A. Tavill, M. Abecassis, G. Chejfec, T. Gramlich, AHPBA/AJCC consensus conference on staging of hepatocellular carcinoma: consensus statement, *HPB (Oxford)* 5 (2003) 243–250.
- [6] J.N. Vauthey, E. Dixon, E.K. Abdalla, W.S. Helton, T.M. Pawlik, B. Taouli, et al., Pretreatment assessment of hepatocellular carcinoma: expert consensus statement, *HPB (Oxford)* 12 (2010) 289–299.
- [7] Liver, In: S.B. Edge, D.R. Byrd, C.C. Compton, A.G. Fritz, F.L. Greene, A. Trotti (Eds.), *AJCC cancer staging manual*, 7th ed., Springer, New York, 2010, pp. 191–195.
- [8] E.L. Kaplan, P. Meier, Nonparametric estimation from incomplete observations, *J. Am. Stat. Assoc.* 53 (1958) 457–481.
- [9] N. Mantel, Evaluation of survival data and two new rank order statistics arising in its consideration, *Cancer Chemother. Rep.* 50 (1966) 163–170.
- [10] D.R. Cox, Regression models and life-tables, *J. R. Stat. Soc. B* 34 (1972) 187–220.
- [11] Tumours of the liver and intrahepatic bile ducts, In: F.D. Bosman, F. Carneiro, R.H. Hruban, N.D. Theise (Eds.), *Classification of tumours of the digestive system*, 4th ed., WHO classification of tumours. Lyon: IARC Press, 2010, pp. 205–216.
- [12] Terminology Committee of the International Hepato-Pancreato-Biliary Association, The Brisbane 2000 terminology of hepatic anatomy and resections, *HPB (Oxford)* 2 (2000) 333–339.
- [13] Y. Zhou, X. Lei, L. Wu, X. Wu, D. Xu, B. Li, Outcomes of hepatectomy for noncirrhotic hepatocellular carcinoma: a systematic review, *Surg. Oncol.* 23 (2014) 136–142.
- [14] D. Dindo, N. Demartines, P.A. Clavien, Classification of surgical complications: A new proposal with evaluation in a cohort of 6336 patients and results of a survey, *Ann. Surg.* 240 (2004) 205–213.
- [15] J.M. Llovet, C. Brú, J. Bruix, Prognosis of hepatocellular carcinoma: the BCLC staging classification, *Semin. Liver Dis.* 19 (1999) 329–338.
- [16] A. Forner, M.E. Reig, C.R. de Lope, J. Bruix, Current strategy for staging and treatment: the BCLC update and future prospects, *Semin. Liver Dis.* 30 (2010) 61–74.

- [17] K. Okuda, T. Ohtsuki, H. Obata, M. Tomimatsu, N. Okazaki, H. Hasegawa, et al., Natural history of hepatocellular carcinoma and prognosis in relation to treatment study of 850 patients, *Cancer* 56 (1985) 918–928.
- [18] The Cancer of the Liver Italian Program (CLIP) Investigators, A new prognostic system for hepatocellular carcinoma: A retrospective study of 435 patients, *Hepatology* 28 (1998) 751–755.
- [19] S. Chevret, J.C. Trinchet, D. Mathieu, A.A. Rached, M. Beaugrand, C. Chastang, A new prognostic classification for predicting survival in patients with hepatocellular carcinoma, *J. Hepatol.* 31 (1999) 133–141.
- [20] T.W.T. Leung, A.M.Y. Tang, B. Zee, W.Y. Lau, P.B. Lai, K.L. Leung, et al., Construction of the Chinese University Prognostic Index for hepatocellular carcinoma and comparison with the TNM staging system, the Okuda staging system, and the cancer of the liver Italian program staging system, *Cancer* 94 (2002) 1760–1769.
- [21] N. Kokudo, K. Hasegawa, M. Akahane, H. Igaki, N. Izumi, T. Ichida, et al., Evidence-based clinical practice guidelines for hepatocellular carcinoma: the Japan Society of Hepatology 2013 update (3rd JSH-HCC guidelines), *Hepatol. Res.* 45 (2015) 123–127.
- [22] M. Kudo, O. Matsui, N. Izumi, H. Iijima, M. Kadoya, Y. Imai, et al., Surveillance and diagnostic algorithm for hepatocellular carcinoma proposed by the Liver Cancer Study Group of Japan: 2014 update, *Oncology* 87 (Suppl. 1) (2014) 7–21.
- [23] J. Bruix, M. Sherman, J.M. Llovet, M. Beaugrand, R. Lencioni, A.K. Burroughs, et al., Clinical management of hepatocellular carcinoma. Conclusions of the Barcelona-2000 EASL conference. European Association for the Study of the Liver, *J. Hepatol.* 35 (2001) 421–430.
- [24] J. Bruix, M. Sherman, Practice Guidelines Committee, American Association for the Study of Liver Diseases, Management of hepatocellular carcinoma, *Hepatology* 42 (2005) 1208–1236.
- [25] J. Shindoh, A. Andreou, T.A. Aloia, G. Zimmitti, G.Y. Lauwers, A. Laurent, et al., Microvascular invasion does not predict long-term survival in hepatocellular carcinoma up to 2cm: Reappraisal of the staging system for solitary tumors, *Ann. Surg. Oncol.* 20 (2012) 1223–1229.
- [26] A. Guglielmi, A. Ruzzenente, S. Conci, A. Valdegamberi, M. Vitali, F. Bertuzzo, et al., Hepatocellular carcinoma: surgical perspectives beyond

- the Barcelona clinic liver cancer recommendations, *World J. Gastroenterol.* 20 (2014) 7525–7533.
- [27] T. Livraghi, G. Brambilla, C. Carnaghi, M.A. Tommasini, G. Torzili, Is it time to reconsider the BCLC/AASLD therapeutic flow-chart? *J. Surg. Oncol.* 102 (2010) 868–876.
- [28] G. Tsoulfas, A. Mekras, P. Agorastou, D. Kiskinis, Surgical treatment for large hepatocellular carcinoma: does size matter? *ANZ J. Surg.* 82 (2012) 510–517.
- [29] M.A. Trovato, A. Pesce, M. Sofia, A. Montineri, A. Basile, F. Palermo, et al., Is BCLC algorithm useful in clinical practice? Study on 164 HCC patients, *Hepatogastroenterology* 60 (2013) 1742–1745.
- [30] S. Leoni, F. Piscaglia, I. Serio, E. Terzi, I. Pettinari, L. Croci, et al., Adherence to AASLD guidelines for the treatment of hepatocellular carcinoma in clinical practice: experience of the Bologna Liver Oncology Group, *Dig. Liver Dis.* 46 (2014) 549–555.
- [31] M. Hernández-Guerra, A. Hernández-Camba, J. Turnes, L.M. Ramos, L. Arranz, J. Mera, et al., Application of the Barcelona Clinic Liver Cancer therapeutic strategy and impact on survival, *United Eur. Gastroenterol. J.* 3 (2015) 284–293.
- [32] L.B. Alexandrov, S. Nik-Zainal, D.C. Wedge, S.A. Aparicio, S. Behjati, A.V. Biankin, et al., Signatures of mutational processes in human cancer, *Nature* 500 (2013) 415–421.
- [33] J.C. Nault, A. Villanueva, Intratumor molecular and phenotypic diversity in hepatocellular carcinoma, *Clin. Cancer Res.* 21 (2015) 1786–1788.
- [34] M. Schlageter, L.M. Terracciano, S. D'Angelo, P. Sorrentino, Histopathology of hepatocellular carcinoma, *World J. Gastroenterol.* 20 (2014) 15955–15964.
- [35] N. Méndez-Sánchez, E. Ridruejo, A. Alves de Mattos, N.C. Chávez-Tapia, R. Zapata, R. Paraná, et al., Latin American Association for the Study of the Liver (LAASL) clinical practice guidelines: Management of hepatocellular carcinoma, *Ann. Hepatol.* 13 (2014) S4–S40.
- [36] S.E. Kim, H.C. Lee, K.M. Kim, Y.S. Lim, Y.H. Chung, Y.S. Lee, et al., Applicability of the BCLC staging system to patients with hepatocellular carcinoma in Korea: analysis at a single center with a liver transplant center, *Korean J. Hepatol.* 17 (2011) 113–119.

- [37] J.J. Zhao, T. Yan, H. Zhao, J.G. Zhou, Z. Huang, Y.F. Zhang, et al., Evaluation of eight different clinical staging systems associated with overall survival of Chinese patients with hepatocellular carcinoma, *Chin. Med. J. (Engl.)* 128 (2015) 316–321.
- [38] M. Omata, L.A. Lesmana, R. Tateishi, P.J. Chen, S.M. Lin, H. Yoshida, et al., Asian Pacific Association for the Study of the Liver consensus recommendations on hepatocellular carcinoma, *Hepatol. Int.* 4 (2010) 439–474.
- [39] K. Okuda, Natural history of hepatocellular carcinoma including fibrolamellar and hepato-cholangiocarcinoma variants, *J. Gastroenterol. Hepatol.* 17 (2002) 401–405.
- [40] P. Farmer, J. Frenk, F.M. Knaul, L.N. Shulman, G. Alleyne, L. Armstrong, et al., Expansion of cancer care and control in countries of low and middle income: a call to action, *Lancet* 376 (2010) 1186–1193.
- [41] S.B. Edge, C.C. Compton, The American Joint Committee on Cancer: The 7th edition of the AJCC cancer staging manual and the future of TNM, *Ann. Surg. Oncol.* 17 (2010) 1471–1474.
- [42] K.M. Kee, J.H. Wang, C.Y. Lin, C.C. Wang, Y.F. Cheng, S.N. Lu, Validation of the 7th edition TNM staging system for hepatocellular carcinoma: an analysis of 8,828 patients in a single medical center, *Dig. Dis. Sci.* 58 (2013) 2721–2728.