



HAL
open science

Chronic use of proton pump inhibitors, adverse events and potential biological mechanisms: A translational analysis

Farid Kheloufi, Diane Frankel, Elise Kaspi, Marion Lepelley, Michel Mallaret,
Quentin Boucherie, Patrice Roll, Joëlle Micallef

► To cite this version:

Farid Kheloufi, Diane Frankel, Elise Kaspi, Marion Lepelley, Michel Mallaret, et al.. Chronic use of proton pump inhibitors, adverse events and potential biological mechanisms: A translational analysis. *Thérapie*, 2018, 10.1016/j.therap.2017.08.003 . hal-01664284

HAL Id: hal-01664284

<https://hal-amu.archives-ouvertes.fr/hal-01664284>

Submitted on 29 Mar 2018

HAL is a multi-disciplinary open access archive for the deposit and dissemination of scientific research documents, whether they are published or not. The documents may come from teaching and research institutions in France or abroad, or from public or private research centers.

L'archive ouverte pluridisciplinaire **HAL**, est destinée au dépôt et à la diffusion de documents scientifiques de niveau recherche, publiés ou non, émanant des établissements d'enseignement et de recherche français ou étrangers, des laboratoires publics ou privés.

Full Title : Chronic Use of proton pump inhibitors, adverse events and potential biological mechanisms: a translational analysis

Short Title : Proton pump inhibitors and pharmacosurveillance

Kheloufi F^{1,2}, Frankel D^{3,4}, Kaspi E^{3,4}, Lepelley M⁵, Mallaret M⁵, Boucherie Q^{1,2}, Roll P^{3,4}, Micallef J^{1,2}

¹ Regional Pharmacovigilance Centre of Marseille Provence Corse, Department of Clinical Pharmacology and Pharmacovigilance, Assistance Publique – Hôpitaux de Marseille, Marseille, France

² Aix Marseille Université, Institut de Neurosciences Timone, CNRS 7289

³ INSERM, GMGF UMRS 910, Aix-Marseille University, Marseille, France

⁴ Hôpital la Timone, Service de Biologie Cellulaire, Marseille, France

⁵ Regional Pharmacovigilance Centre of Grenoble, CHU de Grenoble, France

*Corresponding author:

Joelle MICALLEF, M.D., Ph.D.

Regional Pharmacovigilance Centre of Marseille Provence Corse

270 boulevard Sainte Marguerite

13009 MARSEILLE

Email: joelle.micallef@ap-hm.fr

Telephone: +33491747560

Conflict of interest

Farid KHELOUFI has no conflicts of interest to disclose.

Diane FRANKEL has no conflicts of interest to disclose.

Elise KASPI has no conflicts of interest to disclose

Marion LEPELLEY has no conflicts of interest to disclose

Michel MALLARET has no conflicts of interest to disclose

Quentin BOUCHERIE has no conflicts of interest to disclose

Patrice ROLL has no conflicts of interest to disclose

Joëlle MICALLEF has no conflicts of interest to disclose

1 **Resume**
2
3

4 Les inhibiteurs de la pompe à protons (IPP) sont parmi les médicaments les plus prescrits. Des
5 effets indésirables sont rapportés lors d'une utilisation chronique, souvent en dehors des
6 indications appropriées. L'objectif de ce travail est, après une synthèse précise des études de
7 pharmacoépidémiologiques positives sur le risque de complications rénales, cardiovasculaires
8 et neurologiques (démence, insuffisance rénale chronique, infarctus du myocarde et accident
9 vasculaire cérébral), de proposer une analyse globale et intégrée des mécanismes biologiques
10 potentiellement impliqués.
11

12 Onze études pharmacoépidémiologiques, principalement menées sur des bases de données de
13 d'assurance maladie et d'hospitalisation, ont montré un risque accru de complications
14 associées à l'utilisation du PPI, et souvent lors d'une dose cumulée évocatrice d'une possible
15 relation dose-effet. Plusieurs mécanismes ont été suggérés par des études *in vitro* (dysfonction
16 endothéliale, sénescence endothéliale, hypomagnésémie, augmentation des taux de
17 chromogranine A, diminution du NO dans les cellules endothéliales) conduisant à une
18 altération de l'homéostasie vasculaire, pouvant favoriser la survenue de ces complications.
19

20 Les données disponibles suggèrent que les IPP pourraient avoir un effet Off target,
21 nécessitant une attitude prudente dans leur prescription, en particulier chez les personnes
22 âgées et / ou dans le contexte d'une utilisation chronique.
23
24
25
26
27
28
29
30
31
32
33
34
35
36
37
38
39
40
41
42
43
44
45
46
47
48
49
50
51
52
53
54
55
56
57
58
59
60
61
62
63
64
65

1
2 **Abstract**
3

4 Proton pump inhibitors (PPIs) are among the most frequently prescribed drugs. Even if PPI
5 are usually considered as safe, there is a growing concern for a range of adverse effects of
6 chronic PPI therapy often in the absence of appropriate indications. We propose, after a
7 summary of renal, cardiovascular and neurological complications (dementia, chronic kidney
8 disease, myocardial infarction and stroke), an integrative overview of the potential biological
9 mechanisms involved.
10
11

12 Eleven positive pharmacoepidemiological studies, mainly based on Health Insurance
13 Database linkage to hospital database, reported an increased risk of complications associated
14 to PPI use and often a graded association suggesting also a possible dose-response
15 relationship. Several mechanisms have been suggested through in vitro studies (endothelial
16 dysfunction, endothelial senescence, hypomagnesemia, increase of chromogranin A levels,
17 decrease of NO in endothelial cells) leading to the impairment of vascular homeostasis,
18 paving the way to these complications.
19
20

21 Evidence that PPIs may have off-targets and pleiotropic effects are mounting and may impose
22 a cautious attitude in the prescription of PPI's, especially in elderly and/or in the context of
23 chronic use.
24
25
26
27
28
29
30
31
32
33
34
35

36 **Keys words :** Proton Pump Inhibitors - Safety - Endothelial dysfunction - Vascular risk
37

38
39
40
41
42
43
44
45
46
47
48
49
50
51
52
53
54
55
56
57
58
59
60
61
62
63
64
65
66
67
68
69
70
71
72
73
74
75
76
77
78
79
80
81
82
83
84
85
86
87
88
89
90
91
92
93
94
95
96
97
98
99
100
101
102
103
104
105
106
107
108
109
110
111
112
113
114
115
116
117
118
119
120
121
122
123
124
125
126
127
128
129
130
131
132
133
134
135
136
137
138
139
140
141
142
143
144
145
146
147
148
149
150
151
152
153
154
155
156
157
158
159
160
161
162
163
164
165
166
167
168
169
170
171
172
173
174
175
176
177
178
179
180
181
182
183
184
185
186
187
188
189
190
191
192
193
194
195
196
197
198
199
200
201
202
203
204
205
206
207
208
209
210
211
212
213
214
215
216
217
218
219
220
221
222
223
224
225
226
227
228
229
230
231
232
233
234
235
236
237
238
239
240
241
242
243
244
245
246
247
248
249
250
251
252
253
254
255
256
257
258
259
260
261
262
263
264
265
266
267
268
269
270
271
272
273
274
275
276
277
278
279
280
281
282
283
284
285
286
287
288
289
290
291
292
293
294
295
296
297
298
299
300
301
302
303
304
305
306
307
308
309
310
311
312
313
314
315
316
317
318
319
320
321
322
323
324
325
326
327
328
329
330
331
332
333
334
335
336
337
338
339
340
341
342
343
344
345
346
347
348
349
350
351
352
353
354
355
356
357
358
359
360
361
362
363
364
365
366
367
368
369
370
371
372
373
374
375
376
377
378
379
380
381
382
383
384
385
386
387
388
389
390
391
392
393
394
395
396
397
398
399
400
401
402
403
404
405
406
407
408
409
410
411
412
413
414
415
416
417
418
419
420
421
422
423
424
425
426
427
428
429
430
431
432
433
434
435
436
437
438
439
440
441
442
443
444
445
446
447
448
449
450
451
452
453
454
455
456
457
458
459
460
461
462
463
464
465
466
467
468
469
470
471
472
473
474
475
476
477
478
479
480
481
482
483
484
485
486
487
488
489
490
491
492
493
494
495
496
497
498
499
500
501
502
503
504
505
506
507
508
509
510
511
512
513
514
515
516
517
518
519
520
521
522
523
524
525
526
527
528
529
530
531
532
533
534
535
536
537
538
539
540
541
542
543
544
545
546
547
548
549
550
551
552
553
554
555
556
557
558
559
560
561
562
563
564
565
566
567
568
569
570
571
572
573
574
575
576
577
578
579
580
581
582
583
584
585
586
587
588
589
590
591
592
593
594
595
596
597
598
599
600
601
602
603
604
605
606
607
608
609
610
611
612
613
614
615
616
617
618
619
620
621
622
623
624
625
626
627
628
629
630
631
632
633
634
635
636
637
638
639
640
641
642
643
644
645
646
647
648
649
650
651
652
653
654
655
656
657
658
659
660
661
662
663
664
665
666
667
668
669
670
671
672
673
674
675
676
677
678
679
680
681
682
683
684
685
686
687
688
689
690
691
692
693
694
695
696
697
698
699
700
701
702
703
704
705
706
707
708
709
710
711
712
713
714
715
716
717
718
719
720
721
722
723
724
725
726
727
728
729
730
731
732
733
734
735
736
737
738
739
740
741
742
743
744
745
746
747
748
749
750
751
752
753
754
755
756
757
758
759
760
761
762
763
764
765
766
767
768
769
770
771
772
773
774
775
776
777
778
779
780
781
782
783
784
785
786
787
788
789
790
791
792
793
794
795
796
797
798
799
800
801
802
803
804
805
806
807
808
809
810
811
812
813
814
815
816
817
818
819
820
821
822
823
824
825
826
827
828
829
830
831
832
833
834
835
836
837
838
839
840
841
842
843
844
845
846
847
848
849
850
851
852
853
854
855
856
857
858
859
860
861
862
863
864
865
866
867
868
869
870
871
872
873
874
875
876
877
878
879
880
881
882
883
884
885
886
887
888
889
890
891
892
893
894
895
896
897
898
899
900
901
902
903
904
905
906
907
908
909
910
911
912
913
914
915
916
917
918
919
920
921
922
923
924
925
926
927
928
929
930
931
932
933
934
935
936
937
938
939
940
941
942
943
944
945
946
947
948
949
950
951
952
953
954
955
956
957
958
959
960
961
962
963
964
965
966
967
968
969
970
971
972
973
974
975
976
977
978
979
980
981
982
983
984
985
986
987
988
989
990
991
992
993
994
995
996
997
998
999
1000

53 **Mots clés :** Inhibiteurs de la pompe à protons – Sécurité – Dysfonctionnement endothelial –
54
55
56
57
58
59
60
61
62
63
64
65
66
67
68
69
70
71
72
73
74
75
76
77
78
79
80
81
82
83
84
85
86
87
88
89
90
91
92
93
94
95
96
97
98
99
100
101
102
103
104
105
106
107
108
109
110
111
112
113
114
115
116
117
118
119
120
121
122
123
124
125
126
127
128
129
130
131
132
133
134
135
136
137
138
139
140
141
142
143
144
145
146
147
148
149
150
151
152
153
154
155
156
157
158
159
160
161
162
163
164
165
166
167
168
169
170
171
172
173
174
175
176
177
178
179
180
181
182
183
184
185
186
187
188
189
190
191
192
193
194
195
196
197
198
199
200
201
202
203
204
205
206
207
208
209
210
211
212
213
214
215
216
217
218
219
220
221
222
223
224
225
226
227
228
229
230
231
232
233
234
235
236
237
238
239
240
241
242
243
244
245
246
247
248
249
250
251
252
253
254
255
256
257
258
259
260
261
262
263
264
265
266
267
268
269
270
271
272
273
274
275
276
277
278
279
280
281
282
283
284
285
286
287
288
289
290
291
292
293
294
295
296
297
298
299
300
301
302
303
304
305
306
307
308
309
310
311
312
313
314
315
316
317
318
319
320
321
322
323
324
325
326
327
328
329
330
331
332
333
334
335
336
337
338
339
340
341
342
343
344
345
346
347
348
349
350
351
352
353
354
355
356
357
358
359
360
361
362
363
364
365
366
367
368
369
370
371
372
373
374
375
376
377
378
379
380
381
382
383
384
385
386
387
388
389
390
391
392
393
394
395
396
397
398
399
400
401
402
403
404
405
406
407
408
409
410
411
412
413
414
415
416
417
418
419
420
421
422
423
424
425
426
427
428
429
430
431
432
433
434
435
436
437
438
439
440
441
442
443
444
445
446
447
448
449
450
451
452
453
454
455
456
457
458
459
460
461
462
463
464
465
466
467
468
469
470
471
472
473
474
475
476
477
478
479
480
481
482
483
484
485
486
487
488
489
490
491
492
493
494
495
496
497
498
499
500
501
502
503
504
505
506
507
508
509
510
511
512
513
514
515
516
517
518
519
520
521
522
523
524
525
526
527
528
529
530
531
532
533
534
535
536
537
538
539
540
541
542
543
544
545
546
547
548
549
550
551
552
553
554
555
556
557
558
559
560
561
562
563
564
565
566
567
568
569
570
571
572
573
574
575
576
577
578
579
580
581
582
583
584
585
586
587
588
589
590
591
592
593
594
595
596
597
598
599
600
601
602
603
604
605
606
607
608
609
610
611
612
613
614
615
616
617
618
619
620
621
622
623
624
625
626
627
628
629
630
631
632
633
634
635
636
637
638
639
640
641
642
643
644
645
646
647
648
649
650
651
652
653
654
655
656
657
658
659
660
661
662
663
664
665
666
667
668
669
670
671
672
673
674
675
676
677
678
679
680
681
682
683
684
685
686
687
688
689
690
691
692
693
694
695
696
697
698
699
700
701
702
703
704
705
706
707
708
709
710
711
712
713
714
715
716
717
718
719
720
721
722
723
724
725
726
727
728
729
730
731
732
733
734
735
736
737
738
739
740
741
742
743
744
745
746
747
748
749
750
751
752
753
754
755
756
757
758
759
760
761
762
763
764
765
766
767
768
769
770
771
772
773
774
775
776
777
778
779
780
781
782
783
784
785
786
787
788
789
790
791
792
793
794
795
796
797
798
799
800
801
802
803
804
805
806
807
808
809
810
811
812
813
814
815
816
817
818
819
820
821
822
823
824
825
826
827
828
829
830
831
832
833
834
835
836
837
838
839
840
841
842
843
844
845
846
847
848
849
850
851
852
853
854
855
856
857
858
859
860
861
862
863
864
865
866
867
868
869
870
871
872
873
874
875
876
877
878
879
880
881
882
883
884
885
886
887
888
889
890
891
892
893
894
895
896
897
898
899
900
901
902
903
904
905
906
907
908
909
910
911
912
913
914
915
916
917
918
919
920
921
922
923
924
925
926
927
928
929
930
931
932
933
934
935
936
937
938
939
940
941
942
943
944
945
946
947
948
949
950
951
952
953
954
955
956
957
958
959
960
961
962
963
964
965
966
967
968
969
970
971
972
973
974
975
976
977
978
979
980
981
982
983
984
985
986
987
988
989
990
991
992
993
994
995
996
997
998
999
1000

Abréviations

ADMA : asymmetrical dimethylarginine

ARIC : Atherosclerosis Risk in Communities

CANTAB : CAMbridge Neuropsychological Test Automated Battery

CgA : Chromogranin-A

CKD : Chronic Kidney Disease

DDAH : dimethylarginine dimethylaminohydrolase

DMSO : dimethyl sulphoxide

eGFR : estimated Glomerular Filtration Rate

GHS: Geisinger Health System

NO: nitric oxide

NOS: nitric oxide synthase

PPIs : Proton pump inhibitors

PS: Propensity Score

1
2 **Introduction**
3
4
5
6

7 Proton pump inhibitors (PPIs) are among the most frequently prescribed drugs. In 2012, this
8 class ranked in the top 10 national health-related drug expenditures in United States [1]. The
9 proportion of PPI use is also high in some European countries. In Spain, omeprazole ranked
10 number one in drug sales in 2010, representing 5.5% of total drug packaging invoiced [2].
11
12 The use of antiulcer agents in Spain has increased almost four times since the year 2000,
13 primarily due to an increase in PPI use [2]. Similar trends are seen in other countries including
14 the Netherlands, Iceland, Denmark, United Kingdom, Belgium, France and Australia [2-5].
15
16 Health care providers are increasingly prescribing PPIs for prolonged, sometimes lifetime,
17 use, often without appropriate indications [6]. Furthermore, in several countries several PPIs
18 are available over-the-counter, which encourages their consumption especially for
19 unapproved indications [7]. Many studies have been published on the rate of
20 inappropriateness of PPI in both hospitalized and primary care patients, ranging from 27% to
21 81% [8-9].
22
23

24 Even if PPI are usually considered as safe, there is a growing concern for a range of potential
25 adverse effects due to chronic PPI therapy [6, 10]. More precisely, recent evidence suggests
26 that long term use of PPIs may increase the risk of dementia [11-12] chronic kidney diseases
27 [13-14] and cardiovascular events such as strokes or myocardial infarctions [15-16]. Because
28 new data on biological and clinical experiments with PPI have been published during the
29 same period, we propose, after a summary of these complications, an integrative overview of
30 the potential biological mechanisms involved.
31
32
33
34
35
36
37
38
39
40
41
42
43
44
45
46
47
48
49
50
51
52
53
54
55
56
57
58
59
60
61
62
63
64
65

Drug safety issues related to PPIs are increasing

Many pharmacoepidemiological studies described potential adverse effects of PPI long-term use (Table 1). Over the past 3 years, safety issues related to neurological disorders have also been described, concerning the potential involvement of PPI as a putative factor of dementia, especially in elderly people. The first study published in 2015 was performed on data from a longitudinal multicenter cohort study in elderly primary care patients, the German Study Aging, Cognition and Dementia in primary care (AgeCoDe) including 3327 community-dwelling persons aged > 75 years [17]. The use of PPI had a significantly increased risk of any dementia (HR =1.38) and Alzheimer disease (HR=1.44). Of the covariates included in the study, the known risk factors, age, the presence of ApoE4 allele, depression, diabetes, and stroke were found to increase significantly the risk of any dementia and/or Alzheimer disease [17].

The study of Gomm et al. was performed on a longitudinal sample of patients free of dementia, aged of 75 years (n=73 679) from the largest German Insurance health database including inpatient and outpatient diagnosis (ICD codes) and drugs prescriptions [11].

Using Cox regression with time-dependent variables, and after adjustment for potential confounding factors (age, sex, comorbidity and polypharmacy), a significantly increased risk of incident dementia was found in patients receiving regular PPI compared with the patients without PPI medication (HR= 1.44). As expected, anticholinergic drug use was also a risk factor of incident dementia (HR=1.80).

More recently, a study performed on a population-based cohort (7 863 PPI users) identified from Taiwan's national Health Insurance research Database confirmed the previous works of the two German studies [12]. After propensity score matching and adjustment for the

1 covariates, PPI users had a slightly risk of developing dementia than non-users (HR = 1.22).

2 A significant association between cumulative PPI use and all-cause dementia (trend p-value =
3 0.013) was also found.
4

5
6 Recently two clinical pharmacology studies have shown a significant association between IPP
7 and impairment on cognitive function [18-19]. Akter et al. investigated the effects of a short-
8 term exposure of several PPIs on cognitive functions using a computerized
9 neuropsychological tests battery (Cambridge Neuropsychological Test Automated Battery)
10 called CANTAB which is well documented and validated to measure cognitive impairment in
11 patients and healthy subjects [20]. Sixty healthy and young subjects (range 20-26 years) of
12 either gender were randomly assigned into 6 groups (five groups according each IPP and one
13 placebo group) [18]. A statistically and clinically significant impairment in visual memory,
14 attention, executive function working and planning function was found. Interestingly, using a
15 very large UK population cohort (n= 502 647 participants) assessed by three validated
16 cognitive tests (verbal–numerical reasoning, memory and reaction time), participants in their
17 middle age taking PPIs showed poorer cognitive function compared to non-takers [19].
18
19

20 Recent studies reported that the use of PPIs was also associated with kidney function
21 impairment, and more particularly with chronic kidney disease (CKD).
22
23

24 Xie et al. 2016 have performed a retrospective observational study in the Department of
25 Veterans Affairs national databases, including new users of PPIs (n=173 321) and new users
26 of H2-receptor antagonists (n=20 270) [21]. The authors reported an increased relative risk of
27 incident CKD associated with PPIs use compared with H2 receptor antagonist use (HR= 1.22)
28 They also reported increased relative risks of other endpoints related to renal function,
29 including eGFR (estimated Glomerular Filtration Rate) decline of >30% (HR = 1.32) and end
30 stage renal disease (HR =1.96).
31
32
33
34
35
36
37
38
39
40
41
42
43
44
45
46
47
48
49
50
51
52
53
54
55
56
57
58
59
60
61
62
63
64
65

1 Lazarus et al. conducted a prospective observational study (n=10 482) in the Atherosclerosis
2 Risk in Communities (ARIC) study between 1996 and 2011 and a retrospective study (n=248
3 751) in the Geisinger Health System (GHS), a large rural health care system in the US. The
4 authors reported an increased risk of CKD (as ascertained by ICD codes determined through
5 linkage to the United States Renal Data System registry) associated with self-report PPIs use
6 in the ARIC cohort (HRa= 1.50) [14]. They have replicated these findings in the Geisinger
7 Health System cohort (HRa= 1.17) with the diagnosis of CKD based on eGRF and use of PPI
8 by prescription claims. A higher risk was observed in patients prescribed twice daily at
9 baseline (HRa= 1.46) suggesting a dose-response relationship. The authors estimated an
10 absolute difference in 10-year CKD risk of 1.7% to 3.3% attributable to PPI use, translating
11 into a number needed to harm of approximately from 30 to 60. Sensitivity analysis including a
12 time-varying exposure model, propensity-score matching strengthened the findings [14].
13
14

15 Arora et al compared PPI users versus non-users from the Veterans Affairs Health Care New
16 York and observed a higher risk of CKD (incident <60ml/mi/1.73 m²) in PPIs users [13]. Xi
17 et al aimed to assess the association of PPI use and the risk of long-term outcomes (including
18 incident CKD, CKD progression and end stage renal disease) in those without intervening
19 acute kidney injury (AKI), endorsing the possibility of a direct effect of PPI on chronic renal
20 outcomes [22]. Lastly Klatte et al assessed the association between PPI use and the risk of
21 CKD progression [23].Using the Stockholm CREatinine Measurements database from 2006 to
22 2011, a cohort of new users of PPIs (n=105 305) and new users of H2 blockers (n=9 578) was
23 identified. The primary outcome was the progression of CKD (defined as doubling of
24 creatinine or decrease of eGFR of 30% or more). The secondary outcomes were end-stage
25 renal disease and AKI. Users of PPIs had an increased risk for doubled levels of creatinine
26 (HRa= 1,26) and a decrease in eGFR (HRa =1.26). An increasing cumulative PPI use was
27 associated with a higher risk for both primary outcome [23].
28
29
30
31
32
33
34
35
36
37
38
39
40
41
42
43
44
45
46
47
48
49
50
51
52
53
54
55
56
57
58
59
60
61
62
63
64
65

1 Cardiovascular events have also been associated with PPIs. The association between PPI use
2 and cardiovascular events has been extensively studied due to a possible pharmacokinetic
3
4 interaction with antiplatelet therapy [24-28]. Recently several pharmacoepidemiological
5
6 studies have been performed to address the effect of PPI alone [15, 29-30]. A population-
7
8 based study from Ontario between 1996 and 2008 using a self-matched case series found that
9
10 the initiation of PPIs was associated with a higher risk of acute myocardial infarction (OR
11
12 =1,8) and heart failure (OR= 1.8) [29]. Similar findings were also described with histamine
13
14 H2 receptor antagonists and benzodiazepines, with no known cardiac toxicity, restricting the
15
16 added value of this work. Shi et al conducted a nationwide population-based study using the
17
18 Taiwan National Health Insurance Research Database [30]. Two different study designs were
19
20 performed to identify the association between PPI use and MI, the first using a propensity
21
22 score-matching analysis (PS) and the second a case-crossover analysis. In the PS study, PPI
23
24 use was associated with a 1.58-fold greater risk of MI. The association remains consistent
25
26 across subgroups defined by age, gender and diabetes mellitus. In the second approach, PPI
27
28 use was still associated with an increased risk for MI for 7-day and 14-day window period.
29
30
31
32
33
34
35
36
37
38

39 Using a complex approach for mining clinical data (clinical notes both inpatient and
40
41 outpatient) for pharmacovigilance, Shah et al. demonstrated a two-fold increase of
42
43 cardiovascular mortality in patients with gastroesophageal reflux disease exposed to PPI (HR
44
45 = 2.00; 95% CI 1.07–3.78; P = 0.031) [15]. No cardiovascular risk was found with histamine
46
47 H2-receptor antagonist (Shah, 2015). A retrospective nationwide study on Taiwan national
48
49 health insurance was performed to assess the risk of first-time ischemic stroke associated with
50
51 PPI use [16]. Two analyses were applied, one using a propensity score analysis (PS) and the
52
53 second using a nested case-control design. In the PS study, PPI use was associated with a
54
55
56
57
58
59
60
61
62
63
64
65

1
2 1.36-fold greater risk of stroke. In the second approach, PPI use was still associated with an
3 increased risk for stroke for 30 days, between 31 to 90 days and between 91 and 180 days.
4
5

6 7 **Potential biological mechanisms are emerging**

8
9 Recently, many pathophysiological hypotheses have been proposed to explain cardiovascular
10 events, renal failure and neurological defects potentially induced by PPIs. The biological
11 pathways we present here are inter-connected and linked with 3 major mechanisms which
12 could conduct to high vascular risk, nephrotoxicity and dementia: i) increase of endothelial
13 senescence, ii) endothelial dysfunction and iii) lysosomal acidification impairment (Figure 1).
14
15

16
17 Yepuri et al. demonstrated using human endothelial cells, that a chronic exposure of
18 esomeprazole, but not of another H⁺/K⁺ ATPase inhibitor called SCH-28080, led to an
19 endothelial senescence linked to telomere attrition and oxidative stress [31]. This accelerated
20 endothelial aging was associated with a reduced endothelial cell proliferation and
21 angiogenesis. To support the senescence hypothesis, Costarelli et al. showed by using a
22 transcriptomic approach on human coronary artery endothelial cells, that treatment by
23 omeprazole or lansoprazole induced a down-regulation of genes encoding anti-atherogenic
24 chemokines in senescent endothelial cells, while these genes were up-regulated in untreated
25 senescent cells [32]. By this way, PPIs could activate pro-atherogenic pathways in endothelial
26 senescent cells.
27
28

29
30 Endothelial dysfunction is defined as a reduction in vasodilation in response to endothelial
31 stimuli leading to the development of pathological inflammatory processes and vascular
32 disease. Reduced nitric oxide (NO) synthesis and release by endothelial cells is one of the
33 major mechanism associated with endothelial dysfunction [33]. Using biochemical *in vitro*, *ex*
34 *vivo* and *in vivo* experiments, Ghebremariam et al. demonstrated that PPIs significantly
35 inhibited human dimethylarginine dimethylaminohydrolase (DDAH) activity [34]. This led to
36
37
38
39
40
41
42
43
44
45
46
47
48
49
50
51
52
53
54
55
56
57
58
59
60
61
62
63
64
65

1 an increase of endothelial and serum asymmetrical dimethylarginine (ADMA) levels
2 associated with a decrease of nitric oxide synthase (NOS) and a decrease of NO level in
3
4 endothelial cells. Yepuri et al. also demonstrated a decrease of DDAH1/2 expression in
5
6 endothelial cells associated with a decrease of endothelial NOS (eNOS), inducible NOS
7
8 (iNOS) and NO generation [31]. The increase in ADMA levels may lead to a disruption of
9
10 vascular homeostasis via a decrease of NO release, which could explain the increase risk of
11
12 adverse vascular events in patients receiving PPIs.
13
14
15

16 Furthermore, the European Medicine Agency recently provided a special warning on the
17
18 increase of circulating level of Chromogranin-A (CgA) in patients under PPIs [35-36]. CgA is
19
20 a soluble protein secreted from the adreno-medullary chromaffin granules. The proteolytic
21
22 processing of CgA generates fragments (e.g catestatin, pancreastatin, vasostatin and serpinin)
23
24 [37]. CgA and its fragments generate different angiogenic effects: CgA and vasostatin-1 exert
25
26 anti-angiogenic effects CgA by inhibiting the TNF-elicited changes on endothelial cells and
27
28 the proangiogenic Vascular Endothelial Growth Factor) [38], whereas catestatin activates
29
30 endothelial angiogenesis, vascularization, proliferation, cell chemotaxis and inhibits
31
32 endothelial cell apoptosis [39]. An elevated plasma level of CgA has also been described in
33
34 several cardiovascular pathological contexts as essential hypertension, hypertension
35
36 secondary to parenchymal disease and chronic heart failure. Moreover, Chen et al.
37
38 demonstrated that CgA induces calcium-dependent secretion of all Weibel-Palade body
39
40 constituents, especially endothelin-1 [40]. Endothelin-1 has been implicated in vascular
41
42 dysfunction by pro-inflammatory and pro-atherosclerotic effects [41] and has also been
43
44 associated with CKD [42]. Dhaun et al. suggested that endothelin-1 could impair kidney
45
46 function by acting one of its receptor called ETA, leading to the development of proteinuria
47
48 through its effects on podocytes (alterations in actin skeleton, loss of nephrin) [43]. Moreover,
49
50 endothelin-1 induces the release of pro-inflammatory and profibrotic cytokines via the
51
52
53
54
55
56
57
58
59
60
61
62
63
64
65

1 activation of mesangial cells, and also induces cell proliferation and the production of matrix
2 proteins leading to glomerular sclerosis. Finally, endothelin-1 acts on renal inflammation via
3
4 the macrophages infiltration in glomerulus. Yepuri et al. also provided other mechanisms
5
6 leading to endothelial dysfunction such as impaired endothelial lysosomal acidification
7
8 associated to impaired proteostasis [31]. Furthermore, nephrotoxicity of PPIs could be due to
9
10 defects of lysosomal acidification and proteostasis, to hypomagnesemia or both, causing
11
12 oxidative stress and leading to renal endothelial cell dysfunctions [44].
13
14
15

16 Concerning neurological defects, observational data are now supported by fundamental
17
18 biological studies. First, PPIs such as omeprazole have been shown to cross the blood-brain
19
20 barrier [45]. Badiola et al. demonstrated using in vitro and in vivo models that lansoprazole
21
22 can increase amyloid- β peptides, which is one of the major pathological hallmarks in
23
24 Alzheimer disease [46]. Moreover, Fallahzadeh et al. hypothesized that PPIs could inhibit the
25
26 V-ATPases on microglial lysosomes and lead to a basification of lysosomes, hampering
27
28 degradation of amyloid- β peptides [47]. Another factor increasing dementia in patients
29
30 chronically treated by PPIs might be a vitamin B12 deficiency. Several studies described a
31
32 decrease of vitamin B12 linked to prolonged use of PPIs, especially in elderly individuals [48-
33
34 49]. Indeed, reduced levels of vitamin B12 have been associated with cognitive impairment
35
36 ([50-51]. A decrease of vitamin B12 enhances hyperhomocysteinemia, described to increase
37
38 ADMA, which increases cardiovascular diseases that may cause cognitive decline, leading to
39
40 Alzheimer disease [52]. Thus, cardiovascular impairment potentially induced by PPIs might
41
42 also be considered as an important pathophysiological factor of dementia.
43
44
45
46
47
48
49
50

51 Finally, Marlicz et al. suggested the influence of PPIs on the gut microbiota as an alternative
52
53 to explain an increased risk of chronic diseases linked to these molecules [53]. PPIs could
54
55 affect the gut-vascular permeability leading to bacterial endotoxemia, described to strongly
56
57 increase the risk of cardiovascular disease [54]. Moreover, composition of intestinal
58
59
60
61
62
63
64
65

1 microbiota has been recently proposed as a key factor leading to aging-associated alterations
2 [55], and could have a role in a cognitive decline by the so called ‘gut-brain interactions’ [56].
3
4

5
6
7 To date, biological effects were mostly evaluated *in vitro*. Several questions regarding these
8
9 studies need to be answered such as the relevancy of doses used *in vitro* compared to
10
11 therapeutic dose range used in patients partly because lower protein concentrations in culture
12
13 medium than in plasma [57]. Similarly, drug penetration in cells could be very different in
14
15 *in vitro* compared to *in vivo* conditions due to the use of the vehicle (dimethyl sulphoxide,
16
17 DMSO) increasing cell membrane permeability. Future studies need to understand all the
18
19 underlying mechanisms involved in adverse effects of PPIs by following biological markers
20
21 such as chromogranin A, endothelin-1, magnesium, B12 vitamin or DDAH and ADMA.
22
23
24
25
26
27

28 **Conclusion**

29
30
31 Even though *in vivo* studies are still required to understand and clarify the underlying
32
33 mechanisms of such effects, the available fundamental and clinical data regarding drug safety
34
35 should be considered. Actions should be undertaken particularly because these drug safety
36
37 issues meet a body of evidence around the misuse and overprescribing of PPIs worldwide. As
38
39 written by Lanas, even if the most of these adverse events have been mainly detected in
40
41 observational studies, these potential adverse events should not be dismissed [2]. The
42
43 magnitude of the use of these compounds, the high level of inappropriate use prescription
44
45 worldwide, together with their potential association with serious adverse events, although low
46
47 in frequency, may represent vast numbers of patients in absolute terms.
48
49
50

51
52
53 From now, these preliminary data should impose a very cautious attitude in the prescription of
54
55 PPIs, especially in elderly individual and/or in the context of chronic use, even though the
56
57 mechanisms involved in reported safety issues still have to be clarified. Awareness should be
58
59
60
61

1 raised among prescribers both in hospital and primary care settings. Patients with PPIs
2 prescription, especially those who are on long term therapy, should be regularly reviewed by
3
4 their general practitioner. All patients admitted at hospital with a PPI prescription should also
5
6 be reviewed for reassessment of the real need of maintaining their treatment. These
7
8 educational initiatives should be implemented by regulatory authorities in order to limit
9
10 inappropriate prescribing of PPI and keep these therapies well-used. Such initiatives should
11
12 also be supported by warnings from regulatory authorities, especially given the recent safety
13
14 concern raised about long-term use of PPI.
15
16
17
18
19
20
21
22
23
24
25
26
27
28
29
30
31
32
33
34
35
36
37
38
39
40
41
42
43
44
45
46
47
48
49
50
51
52
53
54
55
56
57
58
59
60
61
62
63
64
65

Figure 1 : Plausible biological mechanisms leading to vascular events, nephrotoxicity and dementia

1
2
3
4
5
6
7
8
9
10
11
12
13
14
15
16
17
18
19
20
21
22
23
24
25
26
27
28
29
30
31
32
33
34
35
36
37
38
39
40
41
42
43
44
45
46
47
48
49
50
51
52
53
54
55
56
57
58
59
60
61
62
63
64
65

References

- [1] Kantor ED, Rehm CD, Haas JS, Chan AT, Giovannucci EL. Trends in Prescription Drug Use Among Adults in the United States From 1999-2012. *JAMA*. 2015 Nov 3;314(17):1818-31.
- [2] Lanas A. We are using too many PPIs, and we need to stop: a European perspective. *Am J Gastroenterol* 2016;111:1085–6.
- [3] ANSM. Vente des Médicaments en France : le rapport d'analyse de l'année 2013 <http://ansm.sante.fr/S-informer/Presse-Communiques-Points-presse/Ventes-de-medicaments-en-France-le-rapport-d-analyse-de-l-annee-2013-Communique>
- [4] Pottegård A, Broe A, Hallas J, de Muckadell OB, Lassen AT, Lødrup AB. Use of proton-pump inhibitors among adults: a Danish nationwide drug utilization study. *Therap Adv Gastroenterol*. 2016 Sep;9(5):671-8
- [5] Hollingworth S, Duncan EL, Martin JH. Marked increase in proton pump inhibitors use in Australia. *Pharmacoepidemiol Drug Saf*. 2010 Oct;19(10):1019-24
- [6] Sheen E, Triadafilopoulos G. Adverse effects of long-term proton pump inhibitor therapy. *Dig Dis Sci*. 2011 Apr;56(4):931-50
- [7] Sheikh I, Waghray A, Waghray N, Dong C, Wolfe MM. Consumer use of over-the-counter proton pump inhibitors in patients with gastroesophageal reflux disease. *Am J Gastroenterol*. 2014 Jun;109(6):789-94
- [8] Savarino V, Dulbecco P, de Bortoli N, Ottonello A, Savarino E. The appropriate use of proton pump inhibitors (PPIs): Need for a reappraisal. *Eur J Intern Med*. 2017 Jan;37:19-24
- [9] Thorel J, McCambridge C, Piau A, Secher M, Magre É, Montastruc JL, Bagheri H. Proton pump inhibitors: Real indication or trivialized prescription? *Therapie*. 2016 Dec;71(6):589-593
- [10] Vaezi MF, Yang YX, Howden CW. Complications of Proton Pump Inhibitor Therapy. *Gastroenterology*. 2017 Jul;153(1):35-48
- [11] Gomm W, von Holt K, Thomé F, Broich K, Maier W, Fink A, Doblhammer G, Haenisch B. Association of Proton Pump Inhibitors With Risk of Dementia: A Pharmacoepidemiological Claims Data Analysis. *JAMA Neurol*. 2016 Apr;73(4):410-6
- [12] Tai SY, Chien CY, Wu DC, Lin KD, Ho BL, Chang YH, Chang YP. Risk of dementia from proton pump inhibitor use in Asian population: A nationwide cohort study in Taiwan. *PLoS One*. 2017 Feb 15;12(2):e0171006.
- [13] Arora P, Gupta A, Golzy M, Patel N, Carter RL, Jalal K, Lohr JW. Proton pump inhibitors are associated with increased risk of development of chronic kidney disease. *BMC Nephrol*. 2016 Aug 3;17(1):112.
- [14] Lazarus B, Chen Y, Wilson FP, Sang Y, Chang AR, Coresh J, Grams ME. Proton Pump Inhibitor Use and the Risk of Chronic Kidney Disease. *JAMA Intern Med*. 2016 Feb;176(2):238-46
- [15] Shah NH, LePendu P, Bauer-Mehren A, Ghebremariam YT, Iyer SV, Marcus J, Nead KT, Cooke JP, Leeper NJ. Proton Pump Inhibitor Usage and the Risk of Myocardial Infarction in the General Population. *PLoS One*. 2015 Jun 10;10(6):e0124653. doi: 10.1371
- [16] Wang YF, Chen YT, Luo JC, Chen TJ, Wu JC, Wang SJ. Proton-Pump Inhibitor Use and the Risk of First-Time Ischemic Stroke in the General Population: A Nationwide Population-Based Study. *Am J Gastroenterol*. 2017 Apr 11.
- [17] Haenisch B, von Holt K, Wiese B, Prokein J, Lange C, Ernst A, Brettschneider C, König HH, Werle J, Weyerer S, Lupp M, Riedel-Heller SG, Fuchs A, Pentzek M, Weeg D, Bickel

H, Broich K, Jessen F, Maier W, Scherer M. Risk of dementia in elderly patients with the use of proton pump inhibitors. *Eur Arch Psychiatry Clin Neurosci*. 2015 Aug;265(5):419-28.

[18] Akter S, Hassan MR, Shahriar M, Akter N, Abbas MG, Bhuiyan MA. Cognitive impact after short-term exposure to different proton pump inhibitors: assessment using CANTAB software. *Alzheimers Res Ther*. 2015 Dec 27;7:79.

[19] Nevado-Holgado AJ, Kim CH, Winchester L, Gallacher J, Lovestone S. Commonly prescribed drugs associate with cognitive function: a cross-sectional study in UK Biobank. *BMJ Open*. 2016 Nov 30;6(11):e012177.

[20] Cassé-Perrot C, Lanteaume L, Deguil J, Bordet R, Auffret A, Otten L, Blin O, Bartrés-Faz D, Micallef J. Neurobehavioral and Cognitive Changes Induced by Sleep Deprivation in Healthy Volunteers. *CNS Neurol Disord Drug Targets*. 2016;15(7):777-801

[21] Xie Y, Bowe B, Li T, Xian H, Balasubramanian S, Al-Aly Z. Proton Pump Inhibitors and Risk of Incident CKD and Progression to ESRD. *J Am Soc Nephrol*. 2016 Oct;27(10):3153-3163.

[22] Xie Y, Bowe B, Li T, Xian H, Yan Y, Al-Aly Z. Long-term kidney outcomes among users of proton pump inhibitors without intervening acute kidney injury. *KidneyInt*. 2017 Jun;91(6):1482-1494

[23] Klatte DCF, Gasparini A, Xu H, de Deco P, Trevisan M, Johansson ALV, Wettermark B, Ärnlöv J, Janmaat CJ, Lindholm B, Dekker FW, Coresh J, Grams ME, Carrero JJ. Association Between Proton Pump Inhibitor Use and Risk of Progression of Chronic Kidney Disease. *Gastroenterology*. 2017 Jun 2. pii: S0016-5085(17)35688-3.

[24] Ho PM, Maddox TM, Wang L, Fihn SD, Jesse RL, Peterson ED, Rumsfeld JS. Risk of adverse outcomes associated with concomitant use of clopidogrel and proton pump inhibitors following acute coronary syndrome. *JAMA*. 2009 Mar 4;301(9):937-44

[25] Charlot M, Grove EL, Hansen PR, Olesen JB, Ahlehoff O, Selmer C, Lindhardsen J, Madsen JK, Køber L, Torp-Pedersen C, Gislason GH. Proton pump inhibitor use and risk of adverse cardiovascular events in aspirin treated patients with first time myocardial infarction: nationwide propensity score matched study. *BMJ*. 2011 May 11;342:d2690.

[26] Charlot M, Ahlehoff O, Norgaard ML, Jørgensen CH, Sørensen R, Abildstrøm SZ, Hansen PR, Madsen JK, Køber L, Torp-Pedersen C, Gislason G. Proton-pump inhibitors are associated with increased cardiovascular risk independent of clopidogrel use: a nationwide cohort study. *Ann Intern Med*. 2010 Sep 21;153(6):378-86.

[27] O'Donoghue ML, Braunwald E, Antman EM, Murphy SA, Bates ER, Rozenman Y, Michelson AD, Hautvast RW, Ver Lee PN, Close SL, Shen L, Mega JL, Sabatine MS, Wiviott SD. Pharmacodynamic effect and clinical efficacy of clopidogrel and prasugrel with or without a proton-pump inhibitor: an analysis of two randomised trials. *Lancet*. 2009 Sep 19;374(9694):989-97.

[28] Pello Lázaro AM, Cristóbal C, Franco-Peláez JA, Tarín N, Aceña Á, Carda R, Huelmos A, Martín-Mariscal ML, Fuentes-Antras J, Martínez-Millá J, Alonso J, Lorenzo Ó, Egido J, López-Bescós L, Tuñón J. Use of Proton-Pump Inhibitors Predicts Heart Failure and Death in Patients with Coronary Artery Disease. *PLoS One*. 2017 Jan 19;12(1):e0169826.

[29] Juurlink DN, Gomes T, Paterson JM, Hellings C, Mamdani MM. Trends in the coprescription of proton pump inhibitors with clopidogrel: an ecological analysis. *CMAJ Open*. 2015 Nov 26;3(4):E428-31.

[30] Shih CJ, Chen YT, Ou SM, Li SY, Chen TJ, Wang SJ. Proton pump inhibitor use represents an independent risk factor for myocardial infarction. *Int J Cardiol*. 2014 Nov 15;177(1):292-7.

[31] Yepuri G, Sukhovshin R, Nazari-Shafti TZ, Petrascheck M, Ghebre YT, Cooke JP. Proton Pump Inhibitors Accelerate Endothelial Senescence. *Circ Res*. 2016 Jun 10;118(12):e36-42.

- 1 [32] Costarelli L, Giacconi R, Malavolta M, Basso A, Piacenza F, Provinciali M, Maggio
2 MG, Corsonello A, Lattanzio F. Different transcriptional profiling between senescent and non-
3 senescent human coronary artery endothelial cells (HCAECs) by Omeprazole and
4 Lansoprazole treatment. *Biogerontology*. 2017 Apr;18(2):217-236
- 5 [33] Brunner H, Cockcroft JR, Deanfield J, et al. Endothelial function and dysfunction. Part
6 II: Association with cardiovascular risk factors and diseases. A statement by the Working
7 Group on Endothelins and Endothelial Factors of the European Society of Hypertension. *J*
8 *Hypertens* 2005;23:233–46
- 9 [34] Ghebremariam YT, LePendu P, Lee JC, Erlanson DA, Slaviero A, Shah NH, Leiper J,
10 Cooke JP. Unexpected effect of proton pump inhibitors: elevation of the cardiovascular risk
11 factor asymmetric dimethylarginine *Circulation*. 2013 Aug 20;128(8):845-53
- 12 [35] EMA. 21 July 2016 EMA/PRAC/452657/2016 Corr1 - Pharmacovigilance Risk
13 Assessment Committee (PRAC)
14 [http://www.ema.europa.eu/docs/en_GB/document_library/PRAC_recommendation_on_signal](http://www.ema.europa.eu/docs/en_GB/document_library/PRAC_recommendation_on_signal/2016/07/WC500210321.pdf)
15 [/2016/07/WC500210321.pdf](http://www.ema.europa.eu/docs/en_GB/document_library/PRAC_recommendation_on_signal/2016/07/WC500210321.pdf)
- 16 [36] Mosli HH, Dennis A, Kocha W, Asher LJ, Van Uum SH. Effect of short-term proton
17 pump inhibitor treatment and its discontinuation on chromogranin A in healthy subjects. *J*
18 *Clin Endocrinol Metab*. 2012 Sep;97(9):E1731-5.
- 19 [37] Angelone T, Mazza R, Cerra MC. Chromogranin-A: a multifaceted cardiovascular role in
20 health and disease. *Curr Med Chem*. 2012;19(24):4042-50
- 21 [38] Tota B, Angelone T, Cerra MC. The surging role of Chromogranin A in cardiovascular
22 homeostasis. *Front Chem*. 2014 Aug 14;2:64.
- 23 [39] Theurl M, Schgoer W, Albrecht K, Jeschke J, Egger M, Beer AG, Vasiljevic D, Rong S,
24 Wolf AM, Bahlmann FH, Patsch JR, Wolf D, Schratzberger P, Mahata SK, Kirchmair R. The
25 neuropeptide catestatin acts as a novel angiogenic cytokine via a basic fibroblast growth
26 factor-dependent mechanism. *Circ Res*. 2010 Nov 26;107(11):1326-35
- 27 [40] Chen Y, Mahata M, Rao F, Khandrika S, Courel M, Fung MM, Zhang K, Stridsberg M,
28 Ziegler MG, Hamilton BA, Lipkowitz MS, Taupenot L, Nievergelt C, Mahata SK, O'Connor
29 DT. Chromogranin A regulates renal function by triggering Weibel-Palade body exocytosis. *J*
30 *Am Soc Nephrol*. 2009 Jul;20(7):1623-32.
- 31 [41] Böhm The importance of endothelin-1 for vascular dysfunction in cardiovascular disease
32 *Cardiovascular Research*, 2007, 76, 8–18
- 33 [42] Kohan DE. Endothelin, hypertension and chronic kidney disease: new insights. *Curr*
34 *Opin Nephrol Hypertens*. 2010 Mar;19(2):134-9.
- 35 [43] Dhaun N, Webb DJ, Kluth DC. Endothelin-1 and the kidney--beyond BP. *Br J*
36 *Pharmacol*. 2012 Oct;167(4):720-31
- 37 [44] Arif F. Nephrotoxic potential of proton pump inhibitors. *Eur J Intern Med*. 2017 Apr 1.
38 pii: S0953-6205(17)30125-
- 39 [45] Cheng FC, Ho YF, Hung LC, Chen CF, Tsai TH. Determination and pharmacokinetic
40 profile of omeprazole in rat blood, brain and bile by microdialysis and high-performance
41 liquid chromatography. *J Chromatogr A*. 2002 Mar 8;949(1-2):35-42.
- 42 [46] Badiola N, Alcalde V, Pujol A, Münter LM, Multhaup G, Lleó A, Coma M, Soler-López
43 M, Aloy P. The proton-pump inhibitor lansoprazole enhances amyloid beta production. *PLoS*
44 *One*. 2013;8(3):e58837.
- 45 [47] Fallahzadeh MK, Borhani Haghghi A, Namazi MR. Proton pump inhibitors:
46 predisposers to Alzheimer disease? *J Clin Pharm Ther*. 2010 Apr;35(2):125-6.
- 47 [48] Dharmarajan TS, Norkus EP. Does long-term PPI use result in vitamin B12 deficiency in
48 elderly individuals? *Nat Clin Pract Gastroenterol Hepatol*. 2008 Nov;5(11):604-5.
- 49 [49] Lam JR, Schneider JL, Zhao W, Corley DA. Proton pump inhibitor and histamine 2
50 receptor antagonist use and vitamin B12 deficiency. *JAMA*. 2013 Dec 11;310(22):2435-42.
- 51
52
53
54
55
56
57
58
59
60
61
62
63
64
65

- 1
2
3
4
5
6
7 [50] Eastley R, Wilcock GK, Bucks RS. Vitamin B12 deficiency in dementia and cognitive
8 impairment: the effects of treatment on neuropsychological function. *Int J Geriatr Psychiatry*.
9 2000 Mar;15(3):226-33.
10 [51] Kim G, Kim H, Kim KN, Son JI, Kim SY, Tamura T, Chang N. Relationship of
11 cognitive function with B vitamin status, homocysteine, and tissue factor pathway inhibitor in
12 cognitively impaired elderly: a cross-sectional survey. *J Alzheimers Dis*. 2013;33(3):853-62.
13 [52] Daulatzai MA. Cerebral Hypoperfusion and Glucose Hypometabolism: Key
14 Pathophysiological Modulators Promote Neurodegeneration, Cognitive Impairment, and
15 Alzheimer's Disease *Journal of Neuroscience Research* 2017, 95:943–972
16 [53] Marlicz W, Koulaouzidis A, Loniewski I, Koulaouzidis G. Letter by Marlicz et al
17 Regarding Article, "Proton Pump Inhibitors Accelerate Endothelial Senescence". *Circ Res*.
18 2016 Jul 8;119(2):e31-2
19 [54] Wiedermann CJ, Kiechl S, Dunzendorfer S, Schratzberger P, Egger G, Oberhollenzer F,
20 Willeit J. Association of endotoxemia with carotid atherosclerosis and cardiovascular disease:
21 prospective results from the Bruneck Study. *J Am Coll Cardiol*. 1999 Dec;34(7):1975-81
22 [55] Vaiserman AM, Koliada AK, Marotta F. Gut microbiota: A player in aging and a target
23 for anti-aging intervention. *Ageing Res Rev*. 2017 May;35:36-45.
24 [56] Caracciolo B, Xu W, Collins S, Fratiglioni L. Cognitive decline, dietary factors and gut-
25 brain interactions. *Mech Ageing Dev*. 2014 Mar-Apr;136-137:59-69.
26 [57] Perrin S, Cremer J, Faucher O, Reynes J, Dellamonica P, Micallef J, Solas C, Lacarelle
27 B, Stretti C, Kaspi E, Robaglia-Schlupp A, Nicolino-Brunet C, Tamalet C, Lévy N, Poizot-
28 Martin I, Cau P, Roll P. HIV protease inhibitors do not cause the accumulation of prelamin A
29 in PBMCs from patients receiving first line therapy: the ANRS EP45 "aging" study. *PLoS*
30 *One*. 2012;7(12):e53035.
31
32
33
34
35
36
37
38
39
40
41
42
43
44
45
46
47
48
49
50
51
52
53
54
55
56
57
58
59
60
61
62
63
64
65

1
2
3
4
5
6
7
8
9
10
11
12
13
14
15
16
17
18
19
20
21
22
23
24
25
26
27
28
29
30
31
32
33
34
35
36
37
38
39
40
41
42
43
44
45
46
47
48
49

Table 1 Published positive pharmacoepidemiological studies assessing a potential association between IPP and adverse events (dementia, chronic kidney disease and vascular events such as stroke or myocardial infarction)

Potential adverse effects	Authors (date) Country	Journal	Design	Study period	Principal Endpoints	Main results
Dementia	Haenisch et al (2015) Germany	Eur Arch Psychiatry Clin Neurosci	Longitudinal multicenter cohort study in the German Study on Aging, Cognition and Dementia in primary care cohort (AgeCoDe)	18 month	Diagnosis of dementia or Alzheimer's disease (Structured Interview for Diagnosis of Dementia of Alzheimer type – SIDAM; DSM IV and ICD-10)	HRa, 1.38, 95 % CI, 1.04–1.83 (Dementia) HRa, 1.44, 95 % CI, 1.01–2.06 (Alzheimer's disease)
Dementia	Gomm et al (2016) Germany	JAMA neurology	Prospective cohort study in the Allgemeine Ortskrankenkassen database (largest German statutory health insurer)	2004-2011	Diagnosis of incident dementia (ICD-10)	HRa, 1.44; 95% CI, 1.36-1.52
Dementia	Tai et al (2017) Taiwan	Plos one	Retrospective study in the Taiwan's national Health Insurance research Database	2000-2003	hospitalization for dementia, and a diagnosis made by a neurologist or psychiatrist (ICD-9)	HRa, 1.22; 95% CI 1.05 ± 1.42 HRa, 1.19; 95% CI 0.95±1.48 (cumulative PPI use)
Chronic Kidney	Xie et al	J Am Soc Nephrol	Retrospective study in the US Department of	2006-2008	Incident CKD : two eGFRs 60	HRa, 1.28; 95%CI, 1.23-1.34 (CKD)

1
2
3
4
5
6
7
8
9
10
11
12
13
14
15
16
17
18
19
20
21
22
23
24
25
26
27
28
29
30
31
32
33
34
35
36
37
38
39
40
41
42
43
44
45
46
47
48
49

disease	(2016) USA		veterans affairs cohort using a propensity matched score		ml/min per 1.73 m2 least 90 days apart Kidney disease progression: eGFR decline over 30% ESRD (including participants with AKI)	HRA, 1.32; 95%CI, 1.23-1.34 (> 30% decline in eGFR) HRA, 1.96 ; 95%CI, 1.21 to 3.18 (ESRD) Graded association between duration of PPI exposure and risk of renal outcomes
Chronic Kidney disease	Lazarus et al (2016) USA	JAMA internal medicine	Atherosclerosis Risk in Communities (ARIC) cohort & Geisinger Health System (GHS) cohort linked to the United States Renal Data System registry Case control study	1996-2011 1997-2014	CKD AKI (ICD-9-CM or ICD-10-CM)	CKD ARIC cohort: HRA, 1.50; 95%CI, 1.14-1.96 GSH cohort: HRA, 1.17; 95%CI, 1.12-1.23 AKI ARIC cohort: HRA, 1.64; 95%CI, 1.22-2.21 GSH cohort: HRA, 1.31; 95%CI, 1.22-1.42
Chronic Kidney disease	Arora et al (2016) USA	BMC Nephrology	Retrospective study in the Veterans Affairs Health Care Upstate New York (VISN2) network Case control study	2001-2008	CKD Death (ICD)	OR, 1.10; 95 % CI 1.05–1.16 (CKD) OR, 1.76; 95 % CI 1.67–1.84 (mortality)
Chronic Kidney disease	Xie et al (2017) USA	Kidney International	Retrospective study in the US Department of veterans affairs cohort using a propensity matched score	2006-2008	Incident CKD: two eGFRs 60 ml/min per 1.73 m2 least 90 days apart eGFR decline	HRA, 1.19; 95% CI, 1.15-1.24 ((eGFR) under 60 ml/min/1.73m2) HR, 1.26; 95% CI, 1.20-1.33 (CKD) HRA, 1.22; 95% CI, 1.16-1.28) (eGFR decline over 30%)

1
2
3
4
5
6
7
8
9
10
11
12
13
14
15
16
17
18
19
20
21
22
23
24
25
26
27
28
29
30
31
32
33
34
35
36
37
38
39
40
41
42
43
44
45
46
47
48
49

					over 30% ESRD or eGFR decline over 50% (excluding participants with AKI)	HRa, 1.30; 95% CI, 1.15-1.48 (ESRD or eGFR decline over 50%)
Chronic Kidney disease	Klatte et al (2017) Sweden	Gastroenterology	Retrospective study in the Stockholm creatinine measurements database	2007-2010.	Progression CKD: doubling of creatinine or decrease in eGFR > 30% ESRD AKI	HRa, 1.26; 95% CI, 1.05-1.51 (doubling creatinine) HRa, 1.26; 95% CI, 1.16-1.36 (decrease in eGFR > 30%) HRa, 2.40; 95% CI, 0.76-7.58 (ESRD) HRa, 1.30; 95% CI, 1.00-1.69 (AKI) Graded association between cumulative exposure to PPIs and risk of CKD progression
Cardiovascular events (Myocardial infarctus)	Juurink et al (2013) Ontario-Canada	Plos One	Ontario Drug Benefit Claims Database & Canadian Institute for Health Information's Discharge Abstract Database (CIHI-DAD) & Health Insurance Plan Database Self-matched case series method in	1996-2008	hospitalization for acute myocardial infarction and hospitalization for heart failure ((ICD-9-CM or ICD-10-CM)	OR 1.8; 95% CI 1.7-1.9 (acute myocardial infarction) OR 1.8; 95% CI 1.7-1.9 (heart failure)
Cardiovascular events (Myocardial infarctus)	Shih et al (2014) Taiwan	Int J Cardiology	Longitudinal Health Insurance Database (LHID) propensity score - matching analyses & case-crossover study	2000-2009	hospitalization for myocardial infarction (ICD9-CM)	Propensity score -matching analyses HRa, 1.58; 95% CI, 1.11-2.25 Case-crossover study OR, 4.61; 95% CI, 1.76-12.07, 7-day window OR, 3.47; 95% CI, 1.76-6.83, 14-day window

1
2
3
4
5
6
7
8
9
10
11
12
13
14
15
16
17
18
19
20
21
22
23
24
25
26
27
28
29
30
31
32
33
34
35
36
37
38
39
40
41
42
43
44
45
46
47
48
49

Cardiovascular events (Stroke)	Wang et al (2017) (Taiwan)	American Journal of Gastroenterology	Retrospective study in the Taiwan Health Insurance database Nested case control design and propensity score matched analysis	2002-2013	hospitalization with a primary diagnosis of ischemic stroke (ICD-9-CM)	HRa, 1.36; 95% CI, 1.14–1.62 (propensity score) HRa, 1.77; 95% CI 1.45–2.18 within 30 days (nested case control design)

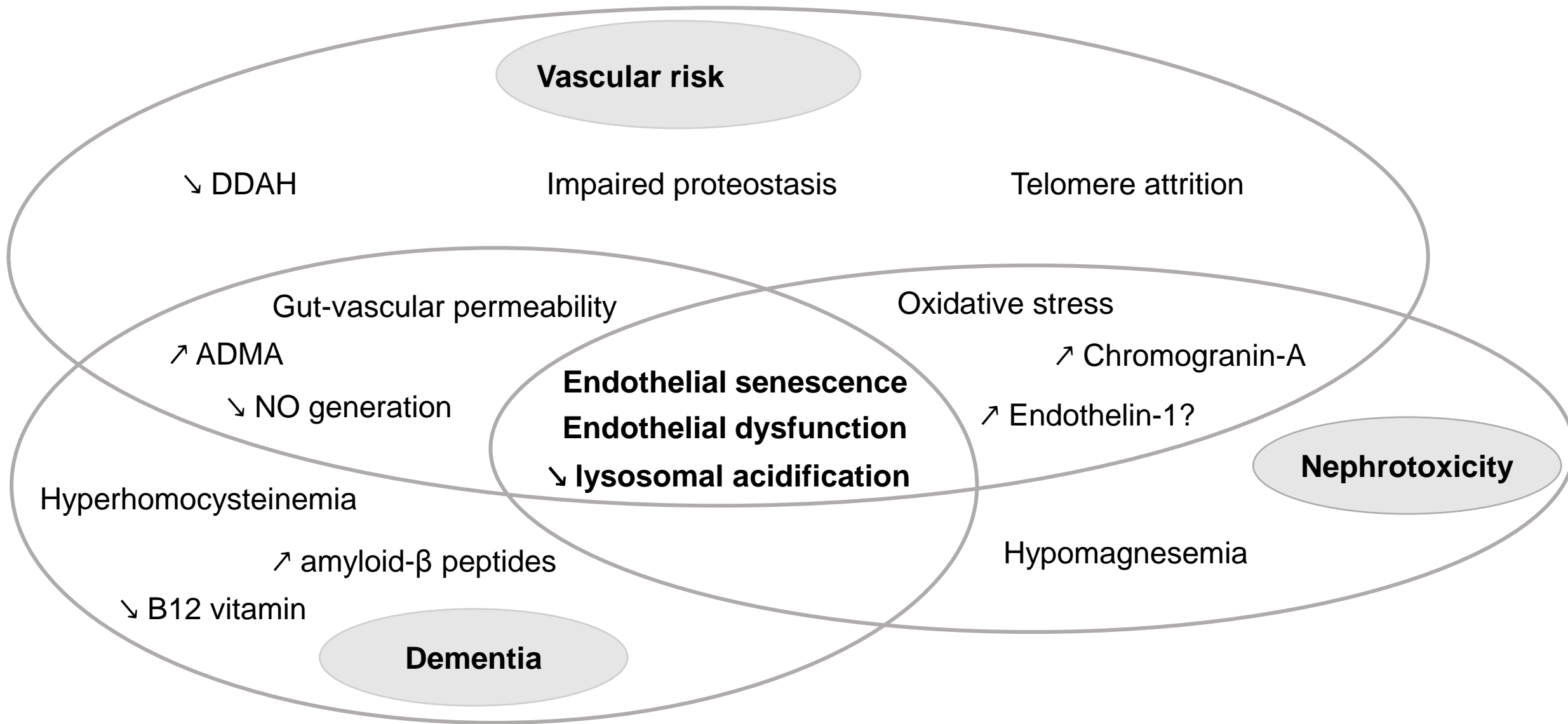


Figure 1: Plausible biological mechanisms leading to vascular events, nephrotoxicity and dementia