



HAL
open science

Effects of different initial condition samplings on photodynamics and spectrum of pyrrole

Mario Barbatti, Kakali Sen

► **To cite this version:**

Mario Barbatti, Kakali Sen. Effects of different initial condition samplings on photodynamics and spectrum of pyrrole. *International Journal of Quantum Chemistry*, 2016, 116 (10), pp.762-771. 10.1002/qua.25049 . hal-02288605

HAL Id: hal-02288605

<https://amu.hal.science/hal-02288605>

Submitted on 15 Sep 2019

HAL is a multi-disciplinary open access archive for the deposit and dissemination of scientific research documents, whether they are published or not. The documents may come from teaching and research institutions in France or abroad, or from public or private research centers.

L'archive ouverte pluridisciplinaire **HAL**, est destinée au dépôt et à la diffusion de documents scientifiques de niveau recherche, publiés ou non, émanant des établissements d'enseignement et de recherche français ou étrangers, des laboratoires publics ou privés.

Effects of different initial condition samplings on photodynamics and spectrum of pyrrole

Mario Barbatti ¹ and Kakali Sen ²

¹ Aix Marseille Université, CNRS, ICR UMR7273, 13397 Marseille, France.

² Department of Chemistry, École Normale Supérieure, UMR ENS-CNRS-UPMC 8640, 24 Rue Lhomond, 75005 Paris, France.

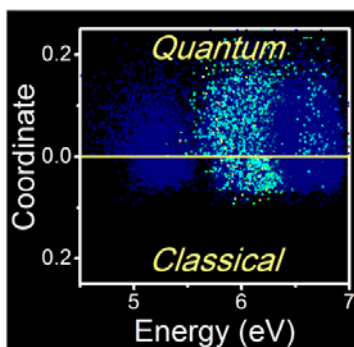
Correspondence to: Mario Barbatti (Email: mario.barbatti@univ-amu.fr)

Abstract

Semi-classical simulations of spectrum and dynamics of complex molecules require statistical sampling of coordinates and momenta. The effects of using thermal and quantum samplings are analyzed taking pyrrole as a test case. It is shown that there are significant differences in the results obtained with each of these two approaches. Overall, quantum sampling based on a Wigner distribution renders superior results, comparing well to the experiments. Dynamics simulations based on surface hopping and ADC(2) reveal that pyrrole internal conversion to the ground state occurs not only through H-elimination path, but also through ring-distortion paths, which have been systematically neglected by diverse experimental setups. The analysis of the reaction paths also shows that the ionization potential varies by more than 5 eV between ionization of the excited state at the Franck-Condon region and at the intersections with the ground state. This feature may have major implications for time-resolved photoelectron spectroscopy.

Graphical abstract

The effects of using thermal and quantum samplings to create initial conditions for dynamics and spectrum simulations are analyzed for pyrrole. There are significant differences in the results obtained with each of these two approaches. Overall, quantum sampling based on a Wigner distribution renders superior results compared to the experiments.



Introduction

In diverse types of simulations, one needs to sample nuclear conformations of a molecule considering the kinetic energy deposited in the internal vibrational modes. This is the case, for instance, of the sampling of the phase space (geometries and velocities) to initiate excited-state dynamics simulations or the sampling of the configurational space (geometries only) for spectrum simulations. There are two basic approaches to carry out these samplings: one may either sample the space by considering that the molecule is at its zero-point level (we will refer to it as the *quantum* or Q sampling); or, alternatively, one may sample the space supposing that the molecule is in thermal equilibrium with the environment (*thermal* or T sampling).

Although we can find examples of both approaches in the literature, they are far from equivalents. While in the Q sampling each vibrational degree of freedom j has energy $\varepsilon_{vQ} = \hbar\omega_j / 2$, in the T sampling each degree has $\varepsilon_{vT} = kT$. Because at $T = 300$ K, ε_{vQ} (roughly, $\langle \varepsilon_{vQ} \rangle \sim 0.1$ eV) is much larger than ε_{vT} (~ 0.03 eV, see Figure 1-top), this means that simulations based on one or other approach may render different results.

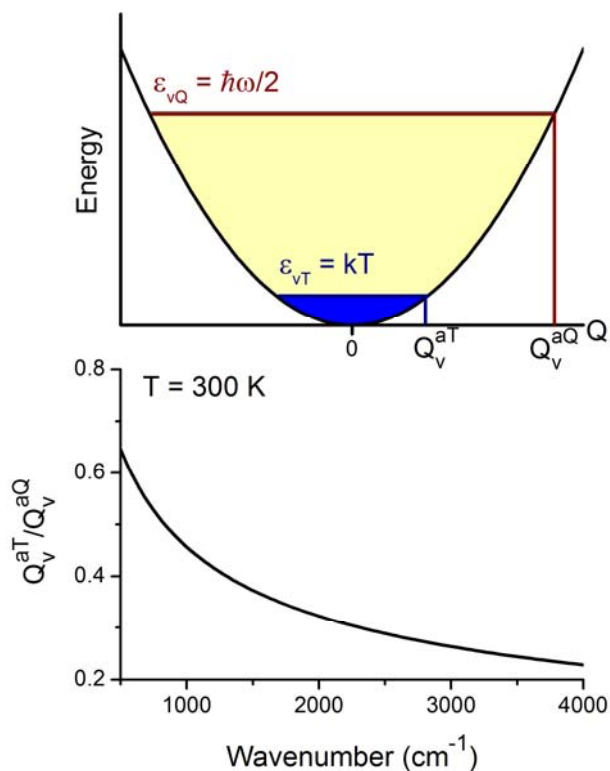
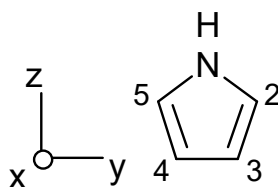


Figure 1. Top: Illustration of the classical ($T = 300$ K) and quantum energies and amplitudes in a one-dimensional harmonic potential. Bottom: Ratio between the classical and quantum amplitudes as a function of the wavenumber (Eq. (1)). The proportions in the upper figure correspond to 1600 cm^{-1} .

This difference of energy per degree of freedom reflects on the vibrational amplitude. Considering that the amplitude of a harmonic oscillator with energy ε is $Q^a = (2\varepsilon / \mu\omega^2)^{1/2}$, the ratio between the amplitudes in the thermal and quantum samplings is

$$\frac{Q^{aT}}{Q^{aQ}} = \left(\frac{2kT}{\hbar\omega_j} \right)^{1/2}. \quad (1)$$

In particular, Eq. (1) implies that the deviation between the thermal and quantum amplitudes tends to increase for larger wavenumbers (Figure 1-bottom).



Scheme 1. 1H-Pyrrole.

In this work, we take pyrrole (Scheme 1) as a test case for investigating the differences between the Q and T samplings. Pyrrole is a small molecule with ultrafast photodynamics.¹ This makes it ideal for benchmarking²⁻¹⁰ as well as for concept and method developments.¹¹⁻¹⁴ Moreover, after high-energy excitation into the bright $\pi\pi^*$ state, pyrrole dynamics branches in several distinct reaction paths,¹⁵ facilitating the comparison and evaluation of the sampling effects. The ultrafast dynamics of photoexcited pyrrole has also been the subject of a large number of experimental (time^{1,16-22} and frequency²³⁻²⁵ domains) and theoretical investigations (statics²⁶⁻²⁸ and dynamics²⁹⁻³⁵). We have ourselves taken pyrrole before to investigate dynamics branching,^{36,37} to test methodology,³⁸ and to understand the role of the conical intersection branching space on the photoproducts.³⁹ Here, we will use it for simulating spectrum and excited-state dynamics starting from Q and T samplings, aiming at understanding their impact on the simulations.

The difference between the Q and T samplings has not gone unnoticed, although it has been largely neglected in the field. As far as we know, the only work comparing them in the context of photochemistry is in the paper by Klaffki et al.,⁴⁰ where they analyzed the results of excited-state dynamics simulations for a protonated Schiff base (PSB3) based on initial conditions generated with both quantum and thermal samplings. They observed a slight trend towards faster reactions when using Q sampling, although the differences were not really statistically significant. They finally prescribed the use of thermal sampling as the preferred methodology, as the Q sampling would provide “artificially high kinetic energies” and lower numerical stability.

We tend to disagree with this analysis. The high kinetic energies of the Q sampling are not artificial, but correspond to the kinetic energies expected for a quantum system. In conceptual terms, the Q sampling through a Wigner distribution should be the proper way of mapping quantum densities on the classical phase space.⁴¹ From a practical perspective, we have observed before⁴² that while spectra simulated with Q sampling rendered satisfactory results, those based on T sampling were too narrow, needing much larger nominal temperatures to reach proper band width description. We have even proposed^{43,44} a hybrid method to sample initial conditions for QM/MM surface hopping dynamics based on Q sampling for the QM and T sampling for the MM regions. The present results for spectrum and dynamics will add to these previous evidences of the superiority of Q over T samplings.

The main contribution of the present work is at providing a more complete and systematic investigation of the effects of sampling on electronic spectrum and nonadiabatic excited-state dynamics. Although the effects of sampling will most likely depend on each particular molecule, we try to figure out features that may reflect general trends of the different sampling methods. We also aim at establishing protocols for each step of the simulations for evaluating the sampling effects, which may be used in other cases as well. As a side-product of this methodological investigation, we also report a new set of excited-state dynamics for pyrrole in the gas phase.

Computational details

Electronic Structure and Dynamics

Excited states were computed with the algebraic diagrammatic construction to the second order [ADC(2)],^{45,46} using the resolution-of-the-identity (RI) approximation⁴⁷ and frozen 1s orbitals. The reference ground state was computed at the second-order Møller-Plesset Perturbation Theory (MP2).⁴⁸ Calculations were done with the aug-cc-pVDZ basis set assigned to for N and C atoms, and with the cc-pVDZ assigned to H atoms.⁴⁹

The absorption spectrum and initial conditions for dynamics were simulated with the nuclear ensemble method⁵⁰ using different types of sampling as discussed below. On-the-fly dynamics simulations were carried out in the excited states computed with ADC(2). Nonadiabatic effects were taken into account by the surface hopping approach.⁵¹ Classical equations were integrated with 0.5 fs time step, while quantum equations were integrated with 0.025 fs, using interpolated quantities between classical steps. The maximum simulation time was 300 fs.

Hopping probabilities between excited states were computed with the fewest switches approach⁵² including decoherence corrections ($\alpha = 0.1$ Hartree).⁵³ Nonadiabatic couplings with

ADC(2) were computed by finite differences with the method discussed in Ref.⁵⁴, which is based on the Hammes-Schiffer-Tully approach.⁵⁵ As a single-reference and low-order method, ADC(2) cannot provide reliable nonadiabatic couplings for crossings with the ground state.⁵⁴ For this reason, when a trajectory reached an S₁-S₀ energy gap smaller than 0.15 eV before the maximum simulation time, it was stopped. This crossing time was taken as an estimate of the internal conversion time to the ground state.

ADC(2) calculations were carried out with the Turbomole program.⁵⁶ The spectrum and dynamics simulations were performed with Newton-X^{57,58} interfaced with Turbomole. Surface intersections (within 0.01 eV) were optimized with the penalty Lagrange multiplier technique ($\alpha = 0.02$ hartree) implemented in the Ciopt program,⁵⁹ which we have adapted to work with ADC(2) and Turbomole. Cremer-Pople parameters were computed with Platon.⁶⁰

Ensemble Sampling

Quantum sampling

The ground-state phase space of a molecule with N_{at} atoms can be conveniently sampled by a harmonic-oscillator Wigner distribution

$$P_W(\mathbf{q}, \mathbf{p}_q) = \frac{1}{(\pi\hbar)^{3N_{at}-6}} \prod_{i=1}^{3N_{at}-6} \exp\left(\frac{-q_i^2}{2\sigma_{qi}^2}\right) \exp\left(\frac{-p_i^2}{2\sigma_{pi}^2}\right), \quad (2)$$

where

$$\begin{aligned} \sigma_{qi}^2 &= \frac{\hbar}{2\mu_i\omega_i} \\ \sigma_{pi}^2 &= \frac{\hbar\mu_i\omega_i}{2} \end{aligned} \quad (3)$$

In these equations, q_i and p_i are the coordinate and momentum for each normal mode i with reduced mass μ_i and angular frequency ω_i . $N_p = 2000$ nuclear geometries and momenta were sampled using Eq. (2) and converted back to Cartesian coordinates. The normal coordinates for the electronic ground state minimum were computed at MP2/(aug)-cc-pVDZ. This set will be referred to as the Q sampling throughout the paper.

Thermal sampling

A Born-Oppenheimer (BO) ground-state dynamics trajectory was run for 10 ps with 1 fs time step using MP2/(aug)-cc-pVDZ. Canonical ensemble (300 K) was enforced via the Andersen thermostat⁶¹ with 0.2 fs⁻¹ collision frequency. A total of 20 snapshots were randomly selected between 5 and 10 ps

of this trajectory to spawn 20 new trajectories. These trajectories run for 25 ps with the same parameters as the original one. Combined, these new trajectories corresponded to 500 ps ground-state dynamics. $N_p = 2000$ snapshots (geometries and velocities) were randomly selected from this set and used to compute the absorption spectrum and also to sample the initial conditions for the excited state dynamics. This set will be referred to as the T_{300} sampling. The same procedure was also adopted to build a second thermal ensemble at $T = 912$ K (T_{912} sampling).

The thermal sampling was also prepared based on molecular mechanics for pyrrole in the gas phase using AMBER 11 suite of programs.⁶² The charges and parameters of pyrrole were taken from Charmm General Force Field for drug like molecules.^{63,64} Pyrrole was first minimized, then slowly heated from 0 to 300 K for 30 ps, and finally equilibrated for 20 ns at 300 K using Langevin thermostat with a collision frequency of 1.0 ps^{-1} . After heating, the production run of 500 ps was performed without electrostatic cutoffs and using the Andersen thermostat with 0.01 fs^{-1} collision frequency. The production run was done with 1 fs time step for 500 ps. 5000 snapshots were used for analysis of the ensemble, which will be referred to as the T_{300}^{MM} sampling.

Spectrum Simulations

Ensembles computed with quantum and thermal samplings were used to simulate the absorption cross section based on the nuclear ensemble approach. For each of the N_p geometries (\mathbf{R}_l) in the ensemble, transition energies (ΔE_{0n}) and oscillator strengths (f_{0n}) for $N_{fs} = 25$ excited states were computed at ADC(2)/(aug)-cc-pVDZ level. The absorption cross section is given by⁵⁰

$$\sigma(E) = \frac{\pi e^2 \hbar}{2mc\epsilon_0 E} \sum_n \frac{1}{N_p} \sum_l \Delta E_{0n}(\mathbf{R}_l) f_{0n}(\mathbf{R}_l) g(E - \Delta E_{0n}(\mathbf{R}_l), \delta), \quad (4)$$

where E is the photon energy of the radiation, ϵ_0 is the vacuum permittivity, c is the speed of light, and e and m are the electron charge and mass. g is a normalized Gaussian line shape

$$g(E - \Delta E_{0n}, \delta) = \frac{1}{(2\pi(\delta/2)^2)^{1/2}} \exp\left(\frac{-(E - \Delta E_{0n})^2}{2(\delta/2)^2}\right), \quad (5)$$

centered at ΔE_{0n} and with width $\delta = 0.05 \text{ eV}$.

Results and Discussion

Sampling characterization

We start by analyzing the energy and geometry distributions arising from each type of sampling. In total, we produced four ensembles: one from quantum sampling (Q) based on the harmonic-oscillator Wigner distribution, and three from thermal samplings. Among the thermal sampling, two ensembles were built at 300 K (T_{300} from a BO trajectory and T_{300}^{MM} from a MM trajectory) and the last one at 912 K (T_{912} also from a BO trajectory), as explained later.

The distribution of kinetic and total ground-state energies for the quantum (Q) and thermal samplings at 300 K (T_{300} and T_{300}^{MM}) are shown in Figure 2. The difference between Q and T samplings is striking. The mean kinetic and total energies in the ground state are much smaller in the T_{300} and T_{300}^{MM} samplings than in the Q sampling. This happens because in the thermal sampling the mean kinetic energy is $3N_{at}kT/2 = 0.39$ eV, while it is $E_{ZP}/2 = 1.18$ eV in the quantum sampling. Apart of a small shift between the distributions, sampling the ensemble either with a BO (T_{300}) or with a MM trajectory (T_{300}^{MM}) leads to equivalent results.

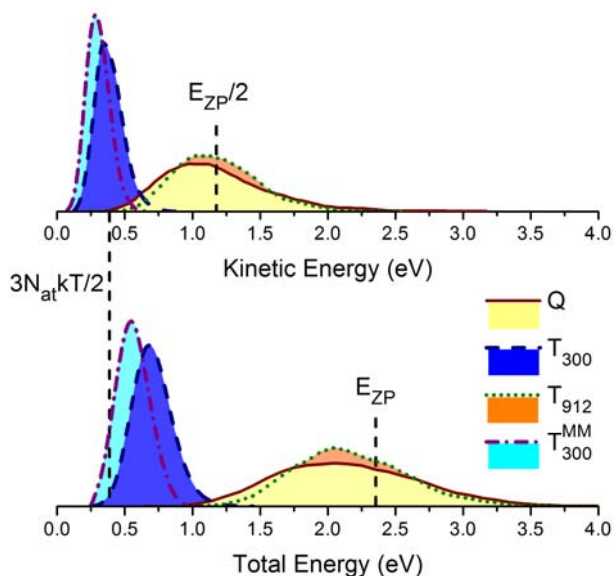


Figure 2. Distribution of ground-state kinetic (top) and total (bottom) energies in the Q and T (BO: $T = 300$ and 912 K; MM: $T = 300$ K) samplings. $E_{ZP} = 2.36$ eV is the harmonic zero-point energy computed at the same QM level.

We may also build the thermal ensemble with a temperature T_{ZP} set to correspond to the zero point energy E_{ZP} :

$$\frac{E_{ZP}}{2} = \frac{3}{2} N_{at} k T_{ZP}. \quad (6)$$

For pyrrole, $T_{ZP} = 912$ K. In this case, the mean value of the T_{912} kinetic-energy distribution is displaced to $E_{ZP}/2$ by construction.

Figure 2 also shows that the width of the energy distributions (kinetic and total) is much narrower in the T_{300} and T_{300}^{MM} samplings than in the Q sampling. To understand this difference, notice that the total energy variance in the quantum sampling based on a harmonic-oscillator Wigner distribution is

$$\sigma_{EQ}^2 = \sum_{i=1}^{3N_{at}-6} \left[\left(\frac{\sigma_{pi}^2}{2\mu_i} \right)^2 + \left(\frac{\mu_i \omega_i \sigma_{qi}^2}{2} \right)^2 \right] = \frac{1}{2} \sum_{i=1}^{3N_{at}-6} (\hbar \omega_i)^2, \quad (7)$$

yielding a quantum distribution with width $2\sigma_{EQ} = 1.12$ eV for pyrrole. In the case of the thermal sampling, supposing that the molecular vibration can be described as Boltzmann-distributed independent harmonic oscillators, the energy variance is

$$\sigma_{ET}^2 = (3N_{at} - 6) k^2 T^2, \quad (8)$$

Thus, the width of the classical distribution is $2\sigma_{ET} = 0.25$ eV, much narrower than the width of the quantum distribution. Once more, we may check the performance of the T_{912} sampling. As shown in Figure 2, the result is in good agreement with the Q sampling.

In the literature, it is also common to sample the geometries using a harmonic oscillator distribution, but then constraining velocity magnitude such that the total energy is the E_{ZP} . This procedure, used for instance in Ref.⁴⁰, results in a total energy distribution for the quantum sampling with zero variance.

In terms of coordinates, the deviations between the distributions of the T- and Q-samplings depend on the specific vibrational frequencies, as expressed in Eq. (1) (see also Figure 1-bottom). In Figure 3, we plot the distributions of three internal coordinates in the ground state for the thermal and quantum samplings.

The first internal coordinate (Figure 3-top) is the NH distance. In the Q sampling, the main normal mode contributing to this coordinate is the NH stretching vibrating at 3683 cm^{-1} . As expected (Eq. (1)), this distribution is much wider than that obtained for both T samplings at 300 K. The deviations between T_{300} and Q are much smaller for the CN-distance distributions (~ 1200 cm^{-1} , see Figure 3-middle), and almost negligible for the CNCC-dihedral distributions (~ 650 cm^{-1}).

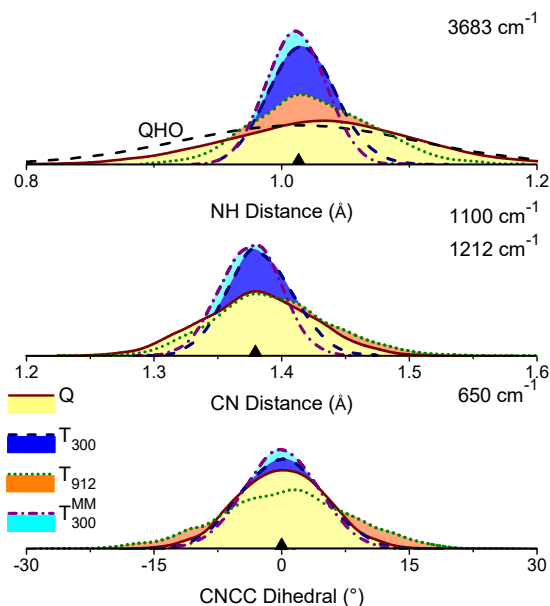


Figure 3. Distributions of NH distances, CN distances, and CNCC dihedral angles for the quantum and thermal (BO: $T = 300$ and 912 K; MM: $T = 300$ K) samplings. The ground-state harmonic oscillator wave function for the N-H stretching mode is indicated the upper graph as well (QHO). The triangles indicate equilibrium values. Wavenumbers of the main modes contributing to the variation of each coordinate are also shown. The areas of all graphs are normalized to one.

The overheated T_{912} sampling produces distributions that are equivalent to those of the Q sampling for middle-range wavenumbers, like in the case of the CN-distance distribution (Figure 3-middle). However, it produces too narrow distributions for high-frequency cases (Figure 3-top) and too broad distributions for low-frequency cases (Figure 3-bottom). We will see in the next section that this unbalanced distribution of energy among the modes leads to artifacts in the spectrum simulations.

Once more, we observe that there is no significant difference between using a BO or MM trajectories to sample the geometries in T_{300} and T_{300}^{MM} . For this reason, in the next section we will proceed only with BO samplings, T_{300} and T_{912} , to simulate the spectrum.

Absorption Spectrum

We have used the nuclear ensemble approach to simulate the absorption spectrum of pyrrole based on ADC(2) excitation energies and oscillator strengths for the Q, T_{300} , and T_{912} samplings.

The nuclear ensemble approach is possibly the simplest approach to simulate electronic spectrum including band shapes. In this method, energies and transition probabilities (proportional to the oscillator strengths) are computed for each geometry in an ensemble representing the initial state distribution, and then summed over (see Eq. (4)) to provide the spectrum.^{50,65} The nuclear ensemble

approach is intuitive, straightforward to implement, and delivers absolute widths and heights even for dark vibronic bands. However, as it does not incorporate any information on the final states wave functions, it completely misses vibrationally resolved features, and tends to predict too symmetric band shapes. (This and more involved approaches for spectrum simulations are discussed, for instance, in Ref. ⁶⁶.) The nuclear ensemble approach is also very handy as the initial step for excited-state dynamics simulations. The same set of geometries used for the spectrum, together with their corresponding momentum, can be used as the initial conditions to start semiclassical trajectories.

The vertical excitations of pyrrole computed with ADC(2) are shown in Table 1. The root-mean-square deviation (RMSD) to the vertical energies computed with CC3 (Ref.¹⁰) is 0.2 eV. Most of vertical transitions are slightly overestimated compared to CC3, with exception of the 1^1A_1 state, the only state in the series with a dominant valence character. The triple- ζ basis marginally stabilizes the double- ζ results by 0.1 eV (RMSD).

Table 1 - Singlet vertical excitations of pyrrole at ADC(2)/(aug)-cc-pVDZ. Velocity-gauge oscillator strengths. The experimental²⁵ oscillator strength between 5.5 and 6.5 eV is given in the parenthesis. Results at ADC(2)/aug-cc-pVTZ are given within brackets.

State	ADC(2)		CC3 ¹⁰		Assignment	Expt. (eV) ²⁵
	ΔE (eV)	f	ΔE (eV)			
1^1A_2	5.27 [5.22]	0.000	5.10		$\pi \rightarrow 3s$	
1^1B_1	5.94 [5.91]	0.006	5.85		$\pi \rightarrow 3p_{yz}$	
2^1B_1	6.04 [6.01]	0.034	5.99		$\pi \rightarrow 3s$	5.861 ^a
2^1A_2	6.11 [5.96]	0.000	5.86		$\pi \rightarrow 3s$	
1^1B_2	6.25 [6.25]	0.143	5.98		$\pi \rightarrow 3p_x$	6.12 ^b (0.12)
2^1A_1	6.33 [6.30]	0.001	6.37		$\pi \rightarrow \pi^*/3p_x$	
3^1B_1	6.58 [6.55]	0.012	6.47		$\pi \rightarrow 3d_{yz}$	
3^1A_2	6.60 [6.53]	0.000	6.43		$\pi \rightarrow 3d_{yz}$	
4^1B_1	6.82 [6.71]	0.024	6.72		$\pi \rightarrow 3p_{yz}$	
4^1A_2	6.85 [6.79]	0.000	6.50		$\pi \rightarrow 3d_{yz}$	
2^1B_2	7.02 [6.82]	0.002	6.63		$\pi \rightarrow 3p_x/\pi^*$	

^a Origin of the state. ^b Estimated “experimental vertical excitation” (see text); its origin is at 5.698 eV and the band maximum is at 5.95 eV.

The experimental spectrum²⁵ of pyrrole below 6.5 eV is dominated by a broad and intense transition into the 1^1B_2 state, which is peaked at 5.95 eV (Figure 4). A narrow intense peak due to the origin of the 2^1B_1 transition features at 5.86 eV. A recent assignment of pyrrole spectrum based on quantum-dynamics simulations is discussed in Ref.³³.

The band maximum is usually taken as the reference value to check computed vertical excitations. Nevertheless, to properly compare theory and experiment, especially in the case of a broad band as that of the 1^1B_2 transition, we should take into account that the experimental band maximum does not correspond to the vertical excitation. We can estimate the deviation between the band maximum and the vertical excitation from the simulated spectrum. The simulated band maximum (Q sampling, Figure 4) is at 6.08 eV. The vertical excitation into the 1^1B_2 state is at 6.25 eV

(Table 1), 0.17 eV higher than the maximum. Assuming that the same shift applies to the experimental data, whose band maximum is at 5.95 eV, the “experimental vertical excitation” may be taken as 6.12 eV. The agreement between the ADC(2) vertical excitation into the 1^1B_2 state (6.25 eV for both basis sets) and the “experimental vertical excitation” (6.12 eV) is excellent.

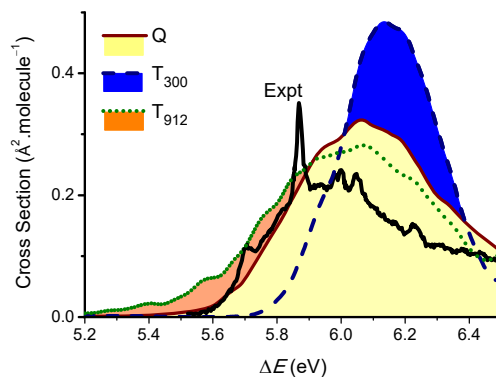


Figure 4. Photoabsorption cross section computed with the quantum and thermal ($T = 300$ and 912 K) samplings compared to the experimental results.²⁵

The absorption spectrum computed with the thermal and quantum samplings based on ADC(2)/(aug)-cc-pVDZ states are shown in Figure 4. The experimental result from Ref.²⁵ is also shown in the figure. At 300 K, the T_{300} sampling produces a spectrum that has qualitatively wrong band shape, when compared to the experimental result. The spectrum based on the Q sampling provides a much better result for the band shape, especially in the low-energy edge.

The failure of the T_{300} sampling in the description of the low-energy edge is related to the geometry of the bright $\pi\pi^*$ minimum. This minimum, the S_4 state with ADC(2), is reached by shortening the C3-C4 bond (by 0.06 Å at ADC(2) level) and stretching the C2-C3 and C5-C4 bonds (both by 0.07 Å). These bond deformations, which lead to small energy gaps of about 5.7 eV, are not well described by the T_{300} sampling.

The spectrum computed with the T_{912} sampling is also shown in Figure 4. The result is significantly better than at 300 K, with the band shape much closer to the experimental one. There is, however, an overestimation of the absorption cross section in the low-energy edge. This is caused by the excess of energy deposited in ring-deformation modes, which leads to artificially too broad distributions as shown in Figure 3-bottom.

Dynamics simulations

To simulate semiclassical dynamics, we need an ensemble of initial geometries and velocities to start each trajectory. Rigorously, surface hopping should be based on a double ensemble strategy.⁵¹

trajectories are started from different geometries and velocities representing the initial distribution of the molecule in the phase space; and for each of these points several trajectories should also be started to sample the random nonadiabatic processes. (Different from classical dynamics, in surface hopping, trajectories initiated with the same conditions may have different fates due to the stochastic nature of the hops.) Commonly, to reduce the computational costs, this double-ensemble approach is replaced by a single ensemble, where only a single trajectory is started from each phase-space point. This is the approach we adopt here as well.

Two sets of excited-state dynamics simulations were run, one starting from initial conditions generated with the Q sampling and another with the T_{300} sampling. In both cases, initial conditions were restricted to the 6.1 ± 0.1 eV energy window, exciting the $\pi \rightarrow 3p_x$ state near the center of the first absorption band. 100 trajectories were computed for each sampling. The number of trajectories starting in each adiabatic state (see Table 2) was taken as proportional to the transition probabilities into each state within the energy window. Thus, in the Q sampling, for instance, 19 trajectories were started in S_3 , 30 in S_4 , 36 in S_5 , and 15 in S_6 . This procedure ensures that the initial conditions in both samplings are equivalent in terms of excitation energy and diabatic character of the initial state.

Table 2 - Distribution of ensemble points among the electronic states according to their oscillator strengths, in the 6.1 ± 0.1 eV energy window. The number of initial conditions (IC) was taken approximately proportional to the nuclear ensemble (NE) up to a total of 100 initial conditions.

	Sampling	S_1	S_2	S_3	S_4	S_5	S_6	S_7	S_7-S_{25}
NE	Q	0	18	120	218	262	112	2	0
NE	T_{300}	0	13	246	286	408	126	0	0
NE	T_{912}	0	19	108	192	208	118	1	0
IC	Q	0	0	19	30	36	15	0	0
IC	T_{300}	0	0	23	27	38	12	0	0

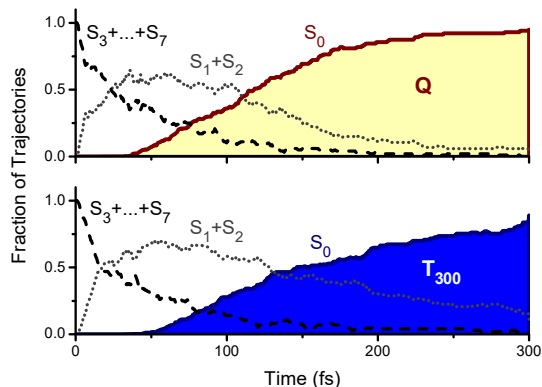


Figure 5. Fraction of trajectories as a function of time in S_0 , S_1+S_2 , and in the $S_3+\dots+S_7$ groups of states for the Q and T_{300} samplings.

The general time-evolution of the trajectories is illustrated in Figure 5. Qualitatively, the results for Q and T₃₀₀ samplings are similar. The occupation of the initially populated states (S₃ to S₆) quickly reduces; first populating S₂ and S₁ with time constant τ_1 and then S₀ with τ_0 :



With such a partition (which includes S₇ in the first group to account for the up-hops from S₆), we can fit the [S₁+S₂] occupation analogously to a unimolecular reaction with an intermediary step

$$F_{S_1+S_2}(t) = \frac{\tau_0}{\tau_{12} - \tau_0} \left[\exp\left(-\frac{t}{\tau_{12}}\right) - \exp\left(-\frac{t}{\tau_0}\right) \right]. \quad (10)$$

The result of this fitting is given in Table 3. Clearly, the initial transfer into S₂ and S₁ is independent of the sampling, and about 27 fs. Nevertheless, the transfer from S₂ and S₁ into S₀ with Q sampling is significantly faster than that with the T₃₀₀ sampling. While with the Q sampling S₀ is populated within approximately $\tau_0 = 90$ fs, with the T₃₀₀ sampling it takes about 148 fs.

Table 3 – Characterization of the T-sampled (300 K) and Q-sampled dynamics in the 6.1±0.1 eV excitation window. Time constants: τ_{12} for exponential transfer from the high excited states into S₁ and S₂; τ_1 for the S₂ transfer to S₁; τ_0 for the transfer from S₁ to S₀; τ_H for S₁ to S₀ transfer via H elimination; τ_R for S₁ to S₀ transfer via ring distortion; $\tau_{\pi\sigma^*}$ for crossing from $\pi 3s$ to $\pi\sigma^*$ (H fragments formation).

Time constant (fs)	Sampling	
	Q	T ₃₀₀
τ_{12}	27	28
τ_1	55	89
τ_0	90	148
τ_H	87	154
τ_R	98	124
$\tau_{\pi\sigma^*}$	64	100

There is also an important difference in the activation of the different reaction paths. Pyrrole internal conversion may occur either through a $\pi\sigma^*/$ ground-state intersection induced by the NH stretching (H-elimination pathway) or through $\pi\pi^*/$ ground-state intersection induced by simultaneous ring opening and puckering (ring-distortion pathway).³⁷ Dynamics starting from the Q sampling features 59% of H-elimination, against 70% when starting from the T₃₀₀ sampling (Figure 6-top). For 100 trajectories, the uncertainty in these values is ±8% for 90% confidence interval. Thus, in spite of some overlap in the extreme of the error bars, it seems that the T₃₀₀ sampling really leads to a preference for H elimination in comparison to the Q sampling.

There is an extensive patch of ring-distortion crossing seam that can give rise to internal conversion to the ground state.⁶⁷ It varies in terms of degree and type of ring puckering. The distribution of ring-distortions at the S₁/S₀ crossing point given by the Cremer-Pople parameters⁶⁸ φ and Q are shown in Figure 6-bottom. For both samplings, internal conversion to the ground state tends

to occur with a substantial puckering degree, between 0.3 and 0.5 Å. Also for both, there is a large variation of types of puckering specially from envelope conformations involving the N atom (E_1) to twisted conformations involving C2 and C3 (2T_3). It is not possible, however, to distinguish any special trends in either sampling.

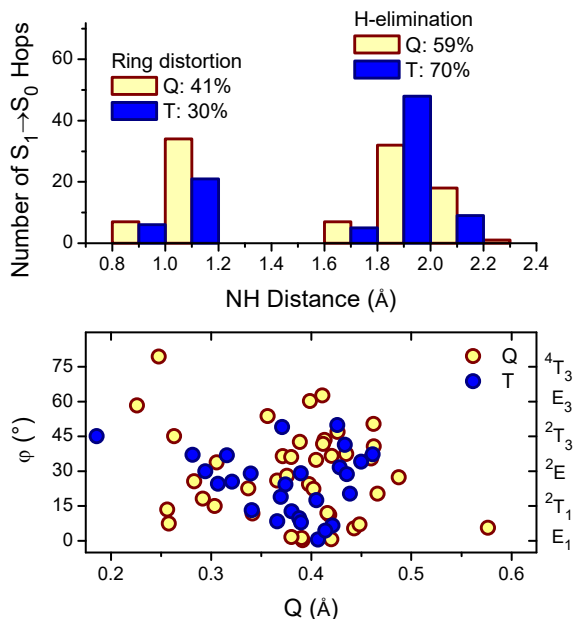


Figure 6. Top: Number of $S_1 \rightarrow S_0$ hops as a function of the NH distance. For 90% confidence interval, the errors in the fractions of ring distortion and H-elimination are $\pm 8\%$. Bottom: Cremer-Pople parameters at the $S_1 \rightarrow S_0$ hop time for the ring-distortion cases. The corresponding puckering conformations are indicated at the right axis. E_n : envelope puckering with atom n below the ring plane (in nE , n is above the plane); mT_n : twisted puckering with m above and n below the plane. $C2 \leftrightarrow C5$ and $C3 \leftrightarrow C4$ equivalence was taken into account, such as that, for instance, E_5 is counted as E_2 .

The bias of T_{300} towards H elimination is somewhat counterintuitive. We could expect that with a narrower NH-distance distribution than in the Q sampling, the activation of the H elimination would also reduce. The reason for having the opposite output is related to the nonadiabatic events bringing pyrrole from S_2 to S_1 . If we apply Eq. (10) to fit the S_1 occupation instead of $S_1 + S_2$, we see that the $S_2 \rightarrow S_1$ transfer time is $\tau_1 = 55$ fs in the Q and 89 fs in the T_{300} sampling. This reflects the smaller momentum of T_{300} trajectories when they reach the S_2/S_1 crossing seam, compared to the momentum of Q trajectories in the same region. The Landau-Zener model⁶⁹ of nonadiabatic transitions helps to understand what happens then: in a two-state crossing, everything else being the same, the larger the momentum, the larger the probability of remaining in the same diabatic pathway. In this way, as the S_2/S_1 crossing seam is reached along ring-distortion modes,³⁷ trajectories with larger momentum are more likely to remain moving along the ring distortion pathway than those with

smaller momentum, which have larger probabilities of changing to another diabatic pathway, resulting in H-elimination.

With the exception of the time constant for transfer the populations from high excited states into S_1 and S_2 (τ_{12}), dynamics is clearly faster with Q than with T_{300} sampling (see Table 3). The $S_1 \rightarrow S_0$ time constant for trajectories following the ring-distortion path is $\tau_R = 98$ fs with Q and somewhat slower with T_{300} , 124 fs. For H elimination, this time increases from $\tau_H = 87$ to 154 fs between the Q and the T_{300} samplings.

Comparison to experimental data

We can summarize the dynamics of pyrrole excited into the $\pi\pi^*$ band as schematically illustrated in Figure 7. This figure shows the singlet (neutral) and doublet (cation) states of pyrrole along the H-elimination and ring distortion computed by linear interpolation of internal coordinates between the ground state minimum and the optimized S_1/S_0 intersections of each path. These calculations were done at the same level as the spectrum and dynamics simulations, ADC(2)/(aug)-cc-pVDZ. In the following description, we will only mention the Q-sampling time constants and populations fractions. Qualitatively, the T_{300} description is exactly the same, but with the values provided in Table 2, Table 3, and Figure 6.

Excitation into the 6.1 ± 0.1 eV (Figure 7a) populates the S_3 - S_6 manifold, especially S_4 and S_5 . After that, pyrrole quickly relaxes to the S_2 state in only 27 fs. S_1 is populated through a S_2/S_1 crossing induced by out-of-plane ring modes (Figure 7b) within 55 fs. The split between the two deactivation paths happens at this crossing: part of the population continues moving along the ring distortion, and the remaining population planarizes and starts the H elimination. The population following the ring distortion ($41 \pm 8\%$) reaches the S_1/S_0 intersection (Figure 7c) within 98 fs. The population following H-elimination (59%) reaches the S_1/S_0 intersection (Figure 7d) within 87 fs. Both paths considered, pyrrole returns to the ground state within 90 fs.

The split of population between the two pathways has been systematically neglected in diverse experimental works, which usually take into account only the H elimination. However, photodissociation experiments at 193 nm (6.42 eV)¹⁵ showed that pyrrole splits half-half between $C_4NH_4 + H$ and $C_3H_4N + HCN$ channels. Moreover, the H fragments also split between fast and slow fractions, corresponding to two different mechanisms. Fast H fragments arise from the H-elimination pathway, while slow H fragments arise from statistical dissociation in the hot ground state competing with HCN production.²⁴ Therefore, the measured systematic increase of slow H fragments between 254 and 193.3 nm²⁴ is an indication that another relaxation path but H-elimination is becoming more and more important at higher excitation energies. The only known alternative for this relaxation pathway is the ring distortion.

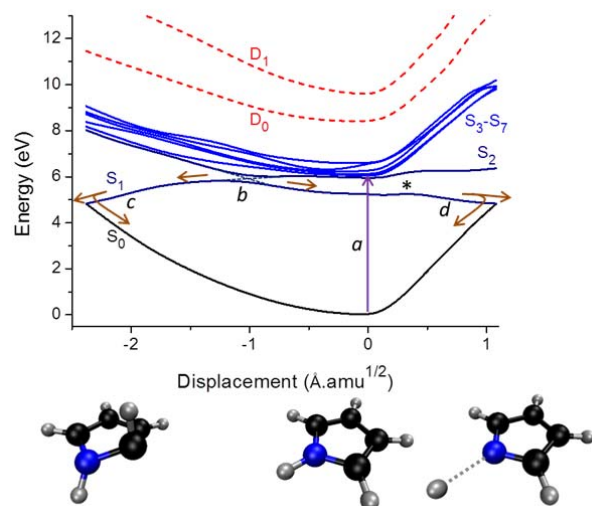


Figure 7. Potential energy profiles of pyrrole along the H-elimination (positive coordinates) and ring-distortion (negative) paths. The ground and singlet excited states (up to S_7) are shown along with the cation (doublet) states D_0 and D_1 . The geometry at left corresponds to the ring-distorted S_1/S_0 intersection; at the center (displacement zero) is the minimum of the ground state; at right is the H-elimination S_1/S_0 intersection. The * indicates the top of the S_1 barrier.

HCN and slow H fragments should result from deactivation through ring-distorted pathways. For this reason, we expect that the ring-distortion/H-elimination branching in the dynamics simulations of pyrrole excited into the $\pi\pi^*$ band should also be large, about 50% to cope with the experimental results. The results from Q sampling (41% ring distortion against 59% H elimination; see Figure 6-top) are doing better in this analysis than those from T_{300} (30% ring distortion). In any case, either with Q or T_{300} samplings, the substantial split between the two reaction paths is a very positive point for ADC(2). Previous full dimensional dynamics of pyrrole carried out with MRCI and TDDFT failed to show such split.^{36,38}

The comparison between experiment and theory concerning the time to reach the ground state poses more challenges. The experiments usually are based on transient variation of the ionization potential (IP) or H-fragments formation. In both, what is measured is not exactly the internal conversion to the ground state. In the first case, the IP strongly varies along the reaction coordinates, a feature that, although recognized,¹⁹ has not been taken into account yet. As we can see in Figure 7, while in the Franck-Condon region (displacement zero), ionization from S_1 into D_0 requires 4.29 eV (289 nm), in the ring-distorted S_1/S_0 intersection it requires 9.05 eV (137 nm) and in the H-elimination S_1/S_0 intersection it requires 9.81 eV (126 nm). In Ref.¹⁶, up to 3×800 nm (4.65 eV) probe pulses were used to ionize pyrrole, while in Ref.¹, the probe pulse was fixed at 266 nm (4.66 eV). In both cases, after the excitation, pyrrole should leave the ionization window much before reaching the intersection to the ground state, rendering time constants that should be shorter than the S_1/S_0 internal conversion

time. In fact, these experiments may be only probing the time for pyrrole to leave the Franck-Condon region.

In the case of H-fragment detection, the first problem is that such experimental setup neglects the fraction of the population deactivating through ring-distortion. Second, because these experiments are based on $1s \rightarrow 2s$ excitation of H atoms followed by its resonant ionization,^{17,21} they may detect H^+ fragments arising from semi-dissociated pyrrole still in the excited state, leading to an underestimation of the lifetime. This happens because the atomic 2s state correlates with the $\pi\sigma^*$ state of pyrrole, which becomes the S_1 after the S_1 -barrier along the H-elimination path (the barrier is indicated by a * in Figure 7; before the barrier, S_1 is $\pi 3s$). Therefore, when the $1s \rightarrow 2s$ excitation takes place, pyrrole may still be in the S_1 state. In Ref.¹⁷, the time constant associated to H^+ detection after 200 nm (6.20 eV) excitation of pyrrole is found to be $\tau_f = 52 \pm 12$ fs. How may we compare the simulations to this result?

Sapunar and co-workers,³⁵ based on surface hopping dynamics also carried out with ADC(2), directly compared the S_1/S_0 deactivation time (in their case, 150 fs) to τ_f from Ref.¹⁷. They attributed the difference between these two values to deficiencies of ADC(2) to describe the potential energy surface of pyrrole. However, since H fragments may arise from excited pyrrole, this comparison is not the most adequate.

What should be compared to the experiment is the time that trajectories following the H-elimination path cross from $\pi 3s$ to $\pi\sigma^*$ state. This crossing (indicated by * in Figure 7) happens at the NH distance of 1.29 Å. The computational quantity that holds the best equivalence to the quantity measured is the cumulative probability of the trajectories to have reached this threshold distance. Fitting this probability with an exponential model similar to that used to fit the transient spectra in the experiments (see supporting information of Ref.¹⁷) results in a H-fragment formation time of $\tau_{\pi\sigma^*} = 64$ fs for Q sampling and 100 fs for T_{300} sampling (Table 3). Compared to the $\tau_f = 52 \pm 12$ fs experimental value,¹⁷ these results mean, first, that there is nothing in principle wrong with ADC(2) simulations and, second, that Q sampling performs better than T_{300} .

Choosing between quantum and thermal samplings

Along this paper, we have shown that the results for excited-state dynamics and the absorption spectrum simulations for pyrrole are very dependent on the method chosen for sampling the ground-state geometry distribution. Unsurprisingly, thermal samplings delivered narrower spectrum and slower dynamics than quantum sampling. Although we have studied a single molecule in this work, most probably these are general trends that should be observed for most of molecular systems investigated with similar methodologies.

We should admit that even before any simulation, we already favored the quantum sampling, as it should be the best representation of a quantum density projected on the classical phase space. The comparison between the simulations and the experiments reinforced this view, as the Q sampling performed clearly better than the T sampling. Thus, our general prescription is that the Q sampling should be the preferred method to sample initial conditions for dynamics and spectrum.

We are aware, however, that for large molecular systems, the Q sampling may be computationally too expensive. As applied here (see Eq.(2))—which could be considered the simplest approximation for a Q sampling—normal displacements are required. To get them may simply be prohibitive, for instance, for typical chromophore-protein systems. One possibility is to resort to a hybrid method like that discussed in Ref.⁴⁴, where the Q sampling is applied only to the chromophore, and the remaining system is thermalized around each frozen chromophore geometry given by the Q ensemble. With such a method, only normal modes for the chromophore are needed.

A special situation may occur for systems with a large number of conformational or isomerization minima. In such a case, the ensemble and the derived quantities (spectrum and initial conditions) should be weighted by the corresponding Boltzmann factor of each minimum. Again, this may make the application of the Q sampling prohibitive because one needs to compute normal modes for each minimum. We have faced such a type of system before, studying the spectrum of urocanic acid.⁷⁰ This molecule has diverse tautomers and the final spectral shape was determined by few of them. To deal with a system with multiple minima, we may once more resort to a hybrid methodology, where a thermal sampling is initially used to locate the minima contributing with the largest Boltzmann factors, and then applying the Q to each of them.

Here, we have discussed a sub-picosecond process. However, for much longer processes (tens of picoseconds), the Q sampling may also pose other challenges. First, because of the faster dynamics than with the T sampling, the quality of the numerical integration of the Newton equations will degrade faster with the Q sampling, which may require shorter time steps to keep the same level of energy conservation than with T sampling.⁴⁰ Moreover, the initial distribution of energy (zero-point energy in each mode) will tend to leak from fast to slow modes, yielding a distribution similar to that discussed for T₉₁₂ sampling. Such situation may additionally require the usage of zero-point energy constraints.⁷¹

Conclusions

Absorption spectrum and excited-state nonadiabatic dynamics simulations for pyrrole in the gas phase, initiated from thermal (T) and quantum (Q) samplings, show that:

- The ground-state properties of the ensemble (energies and internal coordinates) are strongly dependent on the sampling method. By construction, Q sampling renders mean energies near the zero-point level, while T sampling renders much smaller mean energies, near a thermal distribution. The width of the energy distribution is also strikingly different, much broader with Q than with T sampling.
- The difference between the distribution of internal coordinates in the T and Q sampling depends on the normal frequencies contributing to the coordinate. The larger the frequencies are, the larger the differences.
- Overheating the T sampling until it reaches the zero-point level produces good ground-state energy distributions, but creates artifacts in the internal coordinate distributions.
- For all tested properties, T samplings prepared with either Born-Oppenheimer or molecular mechanics produce similar results.
- The absorption spectrum is strongly dependent on the sampling method. T sampling at 300 K produces too narrow spectra compared to the experiments, while the Q-sampled spectrum delivers satisfactory results. With an overheated T sampling, the spectrum is better, although still inferior to that obtained with Q sampling.
- Qualitatively, T and Q samplings lead to similar results in the dynamics. After excitation into S_3 - S_6 manifold ($\pi\pi^*$), the S_2 and S_1 states are populated under 30 fs, and the ground state is reached between 90 and a 148 fs through two types of S_1/S_0 intersections caused either by H elimination or by ring distortion.
- Quantitatively, dynamics starting from Q sampling is faster than starting from T by few tens of femtoseconds. When compared to the experimental results, Q sampling performs better in terms of time constants and distribution of reaction pathways. For instance, the time for H fragments formation is 64 fs with Q and 100 fs with T, while the experimental value¹⁷ is 52 ± 12 fs.

Based on these points, quantum samplings based on Wigner distributions are clearly superior to thermal samplings, and they should be preferred for creating initial conditions for spectrum and excited-state dynamics simulations. Cases where Q sampling is computationally too demanding may be treated with hybrid methods.

Although we do not discuss this aspect here, we would like to remark that the exceptionally narrow ensemble distribution arising from MM and BO trajectories may have impact on ground-state investigations as well. This may be especially relevant when the ensemble is used to evaluate the probabilities of reaching transition states. Clearly, geometries and velocities in thermal ensembles

populate a too restricted region of the phase space, which may lead to an overestimation of the time to reach transition states nearby.

The present simulations have been performed using ADC(2) method with the nuclear ensemble approach for spectrum simulations and surface hopping for dynamics. Compared to the experiments, ADC(2) provided excellent results for vertical excitations and very satisfactory results for spectrum simulations. It has also been able to describe the reaction path split of population during the dynamics between H elimination and ring distortion, a feature expected from photodissociation experiments, which previous simulations based on TDDFT and MRCI missed.

Finally, the present dynamics simulations for pyrrole reinforces the importance of further experiments on this molecule to take into account the substantial amount of internal conversion to the ground state occurring at ring-distorted pathways rather than at H-elimination pathways. The strong variations on the ionization potential along the main reaction coordinates in the excited states should also be considered.

Acknowledgements

This work has been carried out thanks to the support of the A*MIDEX grant (n° ANR-11-IDEX-0001-02) funded by the French Government « Investissements d’Avenir » program. The authors thank Dr. Oliver Weingart, Dr. Michael Stenrup, Dr. Volker Haigis, and Prof. Rodolphe Vuilleumier for discussions.

References

1. Wu, G.; Neville, S. P.; Schalk, O.; Sekikawa, T.; Ashfold, M. N. R.; Worth, G. A.; Stolow, A. *The Journal of Chemical Physics* 2015, 142, 074302.
2. Jagau, T.-C.; Gauss, J. *Chemical Physics* 2012, 401, 73-87.
3. Li, X.; Paldus, J. *The Journal of Physical Chemistry A* 2010, 114, 8591-8600.
4. Shen, J.; Li, S. *The Journal of Chemical Physics* 2009, 131, 174101.
5. Evangelista, F. A.; Simmonett, A. C.; Allen, W. D.; Schaefer, H. F.; Gauss, J. *The Journal of Chemical Physics* 2008, 128, 124104.
6. King, R. A. *The Journal of Physical Chemistry A* 2008, 112, 5727-5733.
7. Burel, R.; Carter, S.; Handy, N. C. *Physical Chemistry Chemical Physics* 2004, 6, 340-343.
8. Köppel, H.; Gromov, E. V.; Trofimov, A. B. *Chemical Physics* 2004, 304, 35-49.

9. Wan, J.; Meller, J.; Hada, M.; Ehara, M.; Nakatsuji, H. *Journal of Chemical Physics* 2000, 113, 7853-7866.
10. Christiansen, O.; Gauss, J.; Stanton, J. F.; Jorgensen, P. *Journal of Chemical Physics* 1999, 111, 525-537.
11. Frank, I.; Damianos, K. *Journal of Chemical Physics* 2007, 126, 125105.
12. Pastore, M.; Angeli, C.; Cimiraglia, R. *Chemical Physics Letters* 2006, 422, 522-528.
13. Celani, P.; Werner, H. J. *Journal of Chemical Physics* 2003, 119, 5044-5057.
14. Sobolewski, A. L.; Domcke, W.; Dedonder-Lardeux, C.; Jouvet, C. *Physical Chemistry Chemical Physics* 2002, 4, 1093-1100.
15. Blank, D. A.; North, S. W.; Lee, Y. T. *Chemical Physics* 1994, 187, 35-47.
16. Montero, R.; Ovejas, V.; Fernández-Fernández, M.; Peralta Conde, Á.; Longarte, A. *The Journal of Chemical Physics* 2014, 141, 014303.
17. Roberts, G. M.; Williams, C. A.; Yu, H.; Chatterley, A. S.; Young, J. D.; Ullrich, S.; Stavros, V. G. *Faraday Discussions* 2013, 163, 95-116.
18. Liu, B.; Wang, Y.; Wang, L. *The Journal of Physical Chemistry A* 2012, 116, 111-118.
19. Montero, R.; Peralta Conde, Á.; Ovejas, V.; Fernández-Fernández, M.; Castaño, F.; Vázquez de Aldana, J. R.; Longarte, A. *The Journal of Chemical Physics* 2012, 137, 064317.
20. Wei, J.; Riedel, J.; Kuczmann, A.; Renth, F.; Temps, F. *Faraday Discussions* 2004, 127, 267-282.
21. Lippert, H.; Ritze, H. H.; Hertel, I. V.; Radloff, W. *Chemphyschem* 2004, 5, 1423-1427.
22. Wei, J.; Kuczmann, A.; Riedel, J.; Renth, F.; Temps, F. *Physical Chemistry Chemical Physics* 2003, 5, 315-320.
23. van den Brom, A. J.; Kapelios, M.; Kitsopoulos, T. N.; Nahler, N. H.; Cronin, B.; Ashfold, M. N. R. *Physical Chemistry Chemical Physics* 2005, 7, 892-899.
24. Cronin, B.; Nix, M. G. D.; Qadiri, R. H.; Ashfold, M. N. R. *Physical Chemistry Chemical Physics* 2004, 6, 5031-5041.
25. Palmer, M. H.; Walker, I. C.; Guest, M. F. *Chemical Physics* 1998, 238, 179-199.
26. Palmer, M. H.; Wilson, P. J. *Molecular Physics* 2003, 101, 2391-2408.
27. Roos, B. O.; Malmqvist, P. A.; Molina, V.; Serrano-Andrés, L.; Merchán, M. *Journal of Chemical Physics* 2002, 116, 7526-7536.
28. Trofimov, A. B.; Köppel, H.; Schirmer, J. *Journal of Chemical Physics* 1998, 109, 1025-1040.
29. Faraji, S.; Vazdar, M.; Reddy, V. S.; Eckert-Maksic, M.; Lischka, H.; Köppel, H. *The Journal of Chemical Physics* 2011, 135, 154310.
30. Lan, Z.; Domcke, W. *Chemical Physics* 2008, 350, 125-138.
31. Lan, Z.; Dupays, A.; Vallet, V.; Mahapatra, S.; Domcke, W. *Journal of Photochemistry and Photobiology a-Chemistry* 2007, 190, 177-189.

32. Vallet, V.; Lan, Z. G.; Mahapatra, S.; Sobolewski, A. L.; Domcke, W. *Journal of Chemical Physics* 2005, 123, 144307.
33. Neville, S. P.; Worth, G. A. *The Journal of Chemical Physics* 2014, 140, 034317.
34. Saita, K.; Nix, M. G. D.; Shalashilin, D. V. *Physical Chemistry Chemical Physics* 2013, 15, 16227-16235.
35. Sapunar, M.; Ponzi, A.; Chaiwongwattana, S.; Malis, M.; Prlj, A.; Decleva, P.; Doslic, N. *Physical Chemistry Chemical Physics* 2015, 17, 19012-19020.
36. Vazdar, M.; Eckert-Maksic, M.; Barbatti, M.; Lischka, H. *Molecular Physics* 2009, 107, 845 - 854.
37. Barbatti, M.; Vazdar, M.; Aquino, A. J. A.; Eckert-Maksic, M.; Lischka, H. *Journal of Chemical Physics* 2006, 125, 164323.
38. Barbatti, M.; Pittner, J.; Pederzoli, M.; Werner, U.; Mitrić, R.; Bonačić-Koutecký, V.; Lischka, H. *Chemical Physics* 2010, 375, 26-34.
39. Sellner, B.; Barbatti, M.; Lischka, H. *Journal of Chemical Physics* 2009, 131, 024312.
40. Klaffki, N.; Weingart, O.; Garavelli, M.; Spohr, E. *Physical Chemistry Chemical Physics* 2012, 14, 14299-14305.
41. Wigner, E. *Physical Review* 1932, 40, 749-759.
42. Lukes, V.; Solc, R.; Barbatti, M.; Lischka, H.; Kauffmann, H. F. *Journal of Theoretical & Computational Chemistry* 2010, 9, 249-263.
43. Ruckenbauer, M.; Barbatti, M.; Müller, T.; Lischka, H. *The Journal of Physical Chemistry A* 2013, 117, 2790-2799.
44. Ruckenbauer, M.; Barbatti, M.; Muller, T.; Lischka, H. *Journal of Physical Chemistry A* 2010, 114, 6757-6765.
45. Trofimov, A. B.; Schirmer, J. *Journal of Physics B: Atomic, Molecular and Optical Physics* 1995, 28, 2299-2324.
46. Schirmer, J. *Physical Review A* 1982, 26, 2395-2416.
47. Hättig, C.; Köhn, A. *Journal of Chemical Physics* 2002, 117, 6939-6951.
48. Hättig, C.; Weigend, F. *Journal of Chemical Physics* 2000, 113, 5154-5161.
49. Dunning Jr., T. H. *The Journal of Chemical Physics* 1989, 90, 1007-1023.
50. Crespo-Otero, R.; Barbatti, M. *Theoretical Chemistry Accounts* 2012, 131, 1237.
51. Barbatti, M. *Wiley Interdisciplinary Reviews: Computational Molecular Sciences* 2011, 1, 620-633.
52. Tully, J. C. *Journal of Chemical Physics* 1990, 93, 1061-1071.
53. Granucci, G.; Persico, M. *Journal of Chemical Physics* 2007, 126, 134114-134111.
54. Plasser, F.; Crespo-Otero, R.; Pederzoli, M.; Pittner, J.; Lischka, H.; Barbatti, M. *Journal of Chemical Theory and Computation* 2014, 10, 1395-1405.
55. Hammes-Schiffer, S.; Tully, J. C. *Journal of Chemical Physics* 1994, 101, 4657-4667.

56. Ahlrichs, R.; Bär, M.; Häser, M.; Horn, H.; Kölmel, C. *Chem. Phys. Lett.* 1989, 162, 165-169.
57. Barbatti, M.; Ruckebauer, M.; Plasser, F.; Pittner, J.; Granucci, G.; Persico, M.; Lischka, H. *Wiley Interdisciplinary Reviews: Computational Molecular Sciences* 2014, 4, 26-33.
58. Barbatti, M.; Granucci, G.; Ruckebauer, M.; Plasser, F.; Crespo-Otero, R.; Pittner, J.; Persico, M.; Lischka, H. *NEWTON-X: a package for Newtonian dynamics close to the crossing seam* 2013, www.newtonx.org.
59. Levine, B. G.; Coe, J. D.; Martínez, T. J. *The Journal of Physical Chemistry B* 2008, 112, 405-413.
60. Spek, A. L. *Journal of Applied Crystallography* 2003, 36, 7-13.
61. Andersen, H. C. *Journal of Chemical Physics* 1980, 72, 2384-2393.
62. Case, D. A.; Darden, T. A.; T.E. Cheatham, I.; Simmerling, C. L.; Wang, J.; Duke, R. E.; Luo, R.; Walker, R. C.; Zhang, W.; Merz, K. M.; Roberts, B.; Wang, B.; Hayik, S.; Roitberg, A.; Seabra, G.; Kolossváry, I.; Wong, K. F.; Paesani, F.; Vanicek, J.; Liu, J.; Wu, X.; Brozell, S. R.; Steinbrecher, T.; Gohlke, H.; Cai, Q.; Ye, X.; Wang, J.; Hsieh, M.-J.; Cui, G.; Roe, D. R.; Mathews, D. H.; Seetin, M. G.; Sagui, C.; Babin, V.; Luchko, T.; Gusarov, S.; Kovalenko, A.; Kollman, P. A. *Amber 11*, University of California, San Francisco 2010.
63. Yu, W.; He, X.; Vanommeslaeghe, K.; MacKerell, A. D. *Journal of Computational Chemistry* 2012, 33, 2451-2468.
64. Vanommeslaeghe, K.; Hatcher, E.; Acharya, C.; Kundu, S.; Zhong, S.; Shim, J.; Darian, E.; Guvench, O.; Lopes, P.; Vorobyov, I.; Mackerell, A. D. *Journal of Computational Chemistry* 2010, 31, 671-690.
65. Bergsma, J. P.; Berens, P. H.; Wilson, K. R.; Fredkin, D. R.; Heller, E. J. *Journal of Physical Chemistry* 1984, 88, 612-619.
66. Petit, A. S.; Subotnik, J. E. *Journal of Chemical Theory and Computation* 2015, 11, 4328-4341.
67. Barbatti, M.; Lischka, H.; Salzmann, S.; Marian, C. M. *Journal of Chemical Physics* 2009, 130, 034305.
68. Cremer, D.; Pople, J. A. *Journal of the American Chemical Society* 1975, 97, 1354-1358.
69. Desouter-Lecomte, M.; Lorquet, J. C. *The Journal of Chemical Physics* 1979, 71, 4391-4403.
70. Barbatti, M. *Physical Chemistry Chemical Physics* 2011, 13, 4686-4692.
71. Xie, Z.; Bowman, J. M. *The Journal of Physical Chemistry A* 2006, 110, 5446-5449.